

---

## Product Datasheet

### KDM3B Antibody (orb1239607)

**Description**

KDM3B Antibody

**Species/Host**

Rabbit

**Reactivity**

Human, Mouse, Rat

**Conjugation**

Unconjugated

**Tested Applications**

ELISA, IF, IHC-P, WB

**Immunogen**

JMJD1B antibody was raised against a 20 amino acid synthetic peptide from near the center of human JMJD1B. The immunogen is located within amino acids 1050 - 1100 of JMJD1B.

**Target**

KDM3B

**Preservatives**

JMJD1B Antibody is supplied in PBS containing 0.02% sodium azide.

**Form/Appearance**

Liquid

**Concentration**

1 mg/mL

**Storage**

JMJD1B antibody can be stored at 4°C for three months and -20°C, stable for up to one year. As with all antibodies care should be taken to avoid repeated freeze thaw cycles. Antibodies should not be exposed to prolonged high temperatures.

**Note**

For research use only

**Application notes**

JMJD1B antibody can be used for detection of JMJD1B by Western blot at 1 - 2 µg/mL. Antibody can also be used for immunohistochemistry starting at 2.5 µg/mL. For immunofluorescence start at 20 µg/mL. Antibody validated: Western Blot in rat samples; Immunohistochemistry in rat samples and Immunofluorescence in rat samples. All other applications and species not yet tested.

**Isotype**

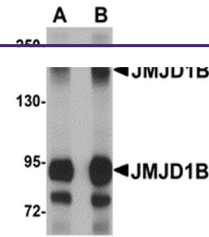
IgG

**Clonality**

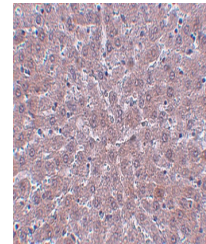
Polyclonal

**Uniprot ID**
[Q7LBC6](#)
**NCBI**
[EAW62141](#)
**Dilution Range**

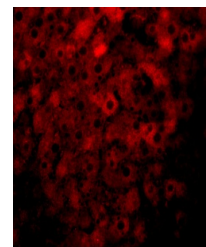
JMJD1B antibody can be used for detection of JMJD1B by Western blot at 1 - 2 µg/mL. Antibody can also be used for immunohistochemistry starting at 2.5 µg/mL. For immunofluorescence start at 20 µg/mL. Antibody validated: Western Blot in rat samples; Immunohistochemistry in rat samples and



Western blot analysis of JMJD1B in rat l...



Immunohistochemistry of JMJD1B in rat li...



Immunofluorescence of JMJD1B in rat live...