
Product Datasheet

JMJD1C Antibody (orb1239606)

Description

JMJD1C Antibody

Species/Host

Rabbit

Reactivity

Human, Mouse, Rat

Conjugation

Unconjugated

Tested Applications

ELISA, IF, IHC-P, WB

Immunogen

JMJD1C antibody was raised against a 20 amino acid synthetic peptide from near the amino terminus of human JMJD1C. The immunogen is located within amino acids 380 - 430 of JMJD1C.

Target

JMJD1C

Preservatives

JMJD1C Antibody is supplied in PBS containing 0.02% sodium azide.

Form/Appearance

Liquid

Concentration

1 mg/mL

Storage

JMJD1C antibody can be stored at 4°C for three months and -20°C, stable for up to one year. As with all antibodies care should be taken to avoid repeated freeze thaw cycles. Antibodies should not be exposed to prolonged high temperatures.

Note

For research use only

Application notes

JMJD1C antibody can be used for detection of JMJD1C by Western blot at 1 - 2 µg/mL. Antibody can also be used for immunohistochemistry starting at 2.5 µg/mL. For immunofluorescence start at 20 µg/mL. Antibody validated: Western Blot in human samples; Immunohistochemistry in rat samples and Immunofluorescence in rat samples. All other applications and species not yet tested.

Isotype

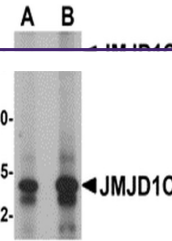
IgG

Clonality

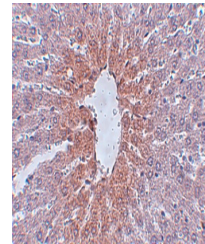
Polyclonal

Uniprot ID
[Q15652](#)
NCBI
[NP_116165](#)
Dilution Range

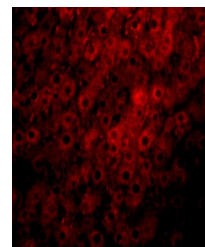
JMJD1C antibody can be used for detection of JMJD1C by Western blot at 1 - 2 µg/mL. Antibody can also be used for immunohistochemistry starting at 2.5 µg/mL. For immunofluorescence start at 20 µg/mL. Antibody validated: Western Blot in human samples; Immunohistochemistry in rat samples and



Western blot analysis of JMJD1C in human...



Immunohistochemistry of JMJD1C in rat li...



Immunofluorescence of JMJD1C in rat live...