
Product Datasheet

KDM1 Antibody (orb1239604)

Description

KDM1 Antibody

Species/Host

Rabbit

Reactivity

Human, Mouse, Rat

Conjugation

Unconjugated

Tested Applications

ELISA, IF, IHC-P, WB

Immunogen

Anti-LSD1 antibody (orb1239604) was raised against a peptide corresponding to 17 amino acids near the amino terminus of human LSD1. The immunogen is located within amino acids 40-90 of LSD1.

Target

KDM1

Preservatives

LSD1 Antibody is supplied in PBS containing 0.02% sodium azide.

Form/Appearance

Liquid

Concentration

1 mg/mL

Storage

LSD1 antibody can be stored at 4°C for three months and -20°C, stable for up to one year. As with all antibodies care should be taken to avoid repeated freeze thaw cycles. Antibodies should not be exposed to prolonged high temperatures.

Note

For research use only

Isotype

IgG

Clonality

Polyclonal

MW

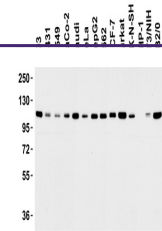
Predicted: 93kD Observed: 110 kD

Uniprot ID
[O60341](https://www.uniprot.org/entry/O60341)
NCBI
[NP_001009999](https://www.ncbi.nlm.nih.gov/nuccore/NP_001009999)
Dilution Range

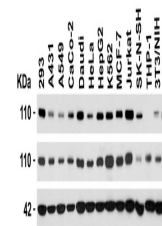
WB: 0.2 - 2 µg/mL; IHC-P: 2 µg/mL; IF: 20 µg/mL. Antibody validated: Western Blot in human, mouse and rat samples; Immunohistochemistry and Immunofluorescence in human samples. All other applications and species not yet tested.

Expiration Date

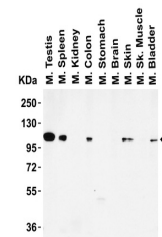
12 months from date of receipt.



Western Blot Validation in Cell Lines. L...



Independent Antibody Validation (IAV) vi...



Western Blot Validation in Mouse Tissues...