
Product Datasheet

JMJD4 Antibody (orb1239603)

Description

JMJD4 Antibody

Species/Host

Rabbit

Reactivity

Human, Rat

Conjugation

Unconjugated

Tested Applications

ELISA, IF, IHC-P, WB

Immunogen

JMJD4 antibody was raised against a 17 amino acid synthetic peptide from near the amino terminus of human JMJD4. The immunogen is located within amino acids 130 - 180 of JMJD4.

Target

JMJD4

Preservatives

JMJD4 Antibody is supplied in PBS containing 0.02% sodium azide.

Form/Appearance

Liquid

Concentration

1 mg/mL

Storage

JMJD4 antibody can be stored at 4°C for three months and -20°C, stable for up to one year. As with all antibodies care should be taken to avoid repeated freeze thaw cycles. Antibodies should not be exposed to prolonged high temperatures.

Note

For research use only

Application notes

JMJD4 antibody can be used for detection of JMJD4 by Western blot at 1 µg/mL. Antibody can also be used for immunohistochemistry starting at 2.5 µg/mL. For immunofluorescence start at 5 µg/mL. Antibody validated: Western Blot in human samples; Immunohistochemistry in rat samples and Immunofluorescence in rat samples. All other applications and species not yet tested.

Isotype

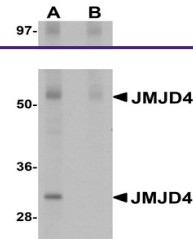
IgG

Clonality

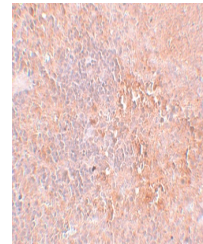
Polyclonal

Uniprot ID
[Q9H9V9](#)
NCBI
[NP_075383](#)
Dilution Range

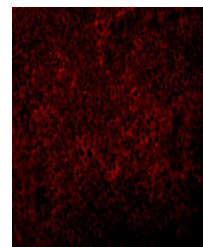
JMJD4 antibody can be used for detection of JMJD4 by Western blot at 1 µg/mL. Antibody can also be used for immunohistochemistry starting at 2.5 µg/mL. For immunofluorescence start at 5 µg/mL. Antibody validated: Western Blot in human samples; Immunohistochemistry in rat samples and



Western blot analysis of JMJD4 in human ...



Immunohistochemistry of JMJD4 in rat spl...



Immunofluorescence of JMJD4 in rat splee...