

---

## Product Datasheet

### JMJD7 Antibody (orb1239600)

**Description**

JMJD7 Antibody

**Species/Host**

Rabbit

**Reactivity**

Human, Mouse, Rat

**Conjugation**

Unconjugated

**Tested**

ELISA, IF, IHC-P, WB

**Applications**
**Immunogen**

JMJD7 antibody was raised against an 18 amino acid synthetic peptide from near the carboxy terminus of human JMJD7. The immunogen is located within amino acids 230 - 280 of JMJD7.

**Target**

JMJD7

**Preservatives**

JMJD7 Antibody is supplied in PBS containing 0.02% sodium azide.

**Form/Appearance**

Liquid

**Concentration**

1 mg/mL

**Storage**

JMJD7 antibody can be stored at 4°C for three months and -20°C, stable for up to one year. As with all antibodies care should be taken to avoid repeated freeze thaw cycles. Antibodies should not be exposed to prolonged high temperatures.

**Note**

For research use only

**Application notes**

JMJD7 antibody can be used for detection of JMJD7 by Western blot at 1 µg/mL. Antibody can also be used for immunohistochemistry starting at 2.5 µg/mL. For immunofluorescence start at 20 µg/mL. Antibody validated: Western Blot in mouse samples; Immunohistochemistry in rat samples and Immunofluorescence in rat samples. All other applications and species not yet tested.

**Isotype**

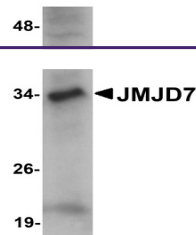
IgG

**Clonality**

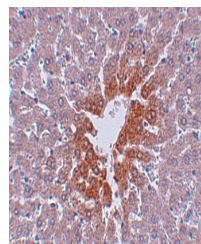
Polyclonal

**Uniprot ID**
**POC870**
**NCBI**
**POC870**
**Dilution Range**

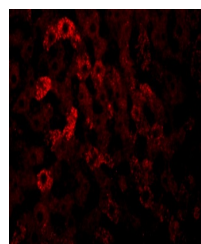
JMJD7 antibody can be used for detection of JMJD7 by Western blot at 1 µg/mL. Antibody can also be used for immunohistochemistry starting at 2.5 µg/mL. For immunofluorescence start at 20 µg/mL. Antibody validated: Western Blot in mouse samples; Immunohistochemistry in rat samples and



Western blot analysis of JMJD7 in 3T3 ce...



Immunohistochemistry of JMJD7 in rat liv...



Immunofluorescence of JMJD7 in rat liver...