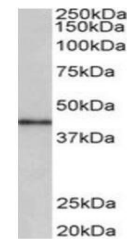


Product Datasheet

CCNDBP1 antibody (orb12396)

Description	Goat polyclonal to CCNDBP1.
Species/Host	Goat
Reactivity	Bovine, Canine, Human, Porcine
Conjugation	Unconjugated
Tested Applications	ELISA, WB
Target	Cyclin D-type binding-protein 1 (aa322-333)
Preservatives	Supplied at 0.5 mg/ml in Tris saline, 0.02% sodium azide, pH 7.3 with 0.5% bovine serum albumin. Aliquot and store at -20°C. Minimize freezing and thawing.
Storage	Aliquot and store at -20°C. Minimize freezing and thawing.
Note	For research use only
Application notes	WB: Approx 40kDa band observed in Human Placenta lysates (calculated MW of 40.3kDa according to NP_036274.3). Recommended concentration: 0.3-1µg/ml.
Protein Sequence	TKASHVTPQPED
Clonality	Polyclonal
MW	40.3
Entrez	23582
Dilution Range	ELISA: 1:4000, WB: 0.3-1 µg/ml
Expiration Date	12 months from date of receipt.



Western blot analysis of Human Placenta ...