
Product Datasheet

JMJD8 Antibody (orb1239599)

Description

JMJD8 Antibody

Species/Host

Rabbit

Reactivity

Human, Mouse, Rat

Conjugation

Unconjugated

Tested Applications

ELISA, IF, IHC-P, WB

Immunogen

JMJD8 antibody was raised against an 18 amino acid synthetic peptide from near the carboxy terminus of human JMJD8. The immunogen is located within amino acids 250 - 300 of JMJD8.

Target

JMJD8

Preservatives

JMJD8 Antibody is supplied in PBS containing 0.02% sodium azide.

Form/Appearance

Liquid

Concentration

1 mg/mL

Storage

JMJD8 antibody can be stored at 4°C for three months and -20°C, stable for up to one year. As with all antibodies care should be taken to avoid repeated freeze thaw cycles. Antibodies should not be exposed to prolonged high temperatures.

Note

For research use only

Application notes

JMJD8 antibody can be used for detection of JMJD8 by Western blot at 1 µg/mL. Antibody can also be used for immunohistochemistry starting at 2.5 µg/mL. For immunofluorescence start at 20 µg/mL. Antibody validated: Western Blot in rat samples; Immunohistochemistry in mouse samples and Immunofluorescence in mouse samples. All other applications and species not yet tested.

Isotype

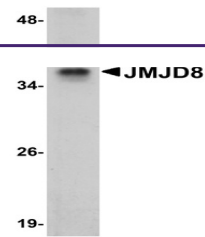
IgG

Clonality

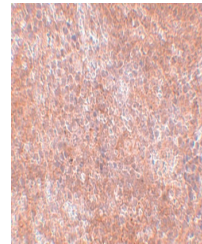
Polyclonal

Uniprot ID
[Q96S16](#)
NCBI
[Q96S16](#)
Dilution Range

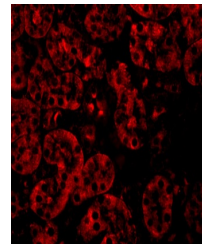
JMJD8 antibody can be used for detection of JMJD8 by Western blot at 1 µg/mL. Antibody can also be used for immunohistochemistry starting at 2.5 µg/mL. For immunofluorescence start at 20 µg/mL. Antibody validated: Western Blot in rat samples; Immunohistochemistry in mouse samples and



Western blot analysis of JMJD8 in rat ki...



Immunohistochemistry of JMJD8 in mouse s...



Immunofluorescence of JMJD8 in Mouse Kid...