
Product Datasheet

JPH1 Antibody (orb1239598)

Description

JPH1 Antibody

Species/Host

Rabbit

Reactivity

Human, Mouse, Rat

Conjugation

Unconjugated

Tested Applications

ELISA, IHC-P, WB

Immunogen

JPH1 antibody was raised against a 15 amino acid synthetic peptide near the carboxy terminus of human JPH1. The immunogen is located within amino acids 470 - 520 of JPH1.

Target

JPH1

Preservatives

JPH1 Antibody is supplied in PBS containing 0.02% sodium azide.

Form/Appearance

Liquid

Concentration

1 mg/mL

Storage

JPH1 antibody can be stored at 4°C for three months and -20°C, stable for up to one year. As with all antibodies care should be taken to avoid repeated freeze thaw cycles. Antibodies should not be exposed to prolonged high temperatures.

Note

For research use only

Application notes

JPH1 antibody can be used for detection of JPH1 by Western blot at 1 - 2 µg/mL. Antibody can also be used for immunohistochemistry starting at 2.5 µg/mL. Antibody validated: Western Blot in human samples and Immunohistochemistry in mouse samples. All other applications and species not yet tested.

Isotype

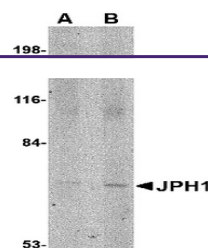
IgG

Clonality

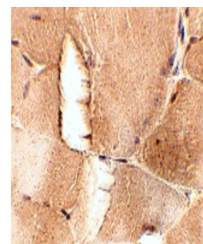
Polyclonal

Uniprot ID
[Q9HDC5](#)
NCBI
[AAI39833](#)
Dilution Range

JPH1 antibody can be used for detection of JPH1 by Western blot at 1 - 2 µg/mL. Antibody can also be used for immunohistochemistry starting at 2.5 µg/mL. Antibody validated: Western Blot in human samples and Immunohistochemistry in mouse samples. All other applications and species not yet tested.



Western blot analysis of JPH1 in 293 cel...



Immunohistochemistry of JPH1 in mouse sk...