

---

## Product Datasheet

### JPH4 Antibody (orb1239597)

**Description**

JPH4 Antibody

**Species/Host**

Rabbit

**Reactivity**

Human, Mouse, Rat

**Conjugation**

Unconjugated

**Tested Applications**

ELISA, IHC-P, WB

**Immunogen**

JPH2 antibody was raised against a 17 amino acid synthetic peptide near the carboxy terminus of human JPH2. The immunogen is located within amino acids 470 - 520 of JPH2.

**Target**

JPH4

**Preservatives**

JPH2 Antibody is supplied in PBS containing 0.02% sodium azide.

**Form/Appearance**

Liquid

**Concentration**

1 mg/mL

**Storage**

JPH2 antibody can be stored at 4°C for three months and -20°C, stable for up to one year. As with all antibodies care should be taken to avoid repeated freeze thaw cycles. Antibodies should not be exposed to prolonged high temperatures.

**Note**

For research use only

**Application notes**

JPH2 antibody can be used for detection of JPH2 by Western blot at 1 - 2 µg/mL. Antibody can also be used for immunohistochemistry starting at 2.5 µg/mL. Antibody validated: Western Blot in mouse samples and Immunohistochemistry in mouse samples. All other applications and species not yet tested.

**Isotype**

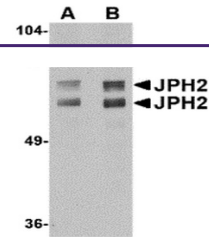
IgG

**Clonality**

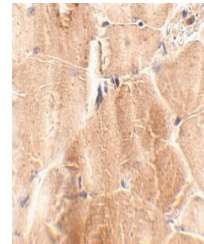
Polyclonal

**Uniprot ID**
[Q96JJ6](#)
**NCBI**
[NP\\_065166](#)
**Dilution Range**

JPH2 antibody can be used for detection of JPH2 by Western blot at 1 - 2 µg/mL. Antibody can also be used for immunohistochemistry starting at 2.5 µg/mL. Antibody validated: Western Blot in mouse samples and Immunohistochemistry in mouse samples. All other applications and species not yet tested.



Western blot analysis of JPH2 in mouse b...



Immunohistochemistry of JPH2 in mouse sk...