
Product Datasheet

JPH3 Antibody (orb1239596)

Description

JPH3 Antibody

Species/Host

Rabbit

Reactivity

Human, Mouse, Rat

Conjugation

Unconjugated

Tested Applications

ELISA, IF, IHC-P, WB

Immunogen

JPH3 antibody was raised against a 18 amino acid synthetic peptide near the carboxy terminus of human JPH3. The immunogen is located within amino acids 540 - 590 of JPH3.

Target

JPH3

Preservatives

JPH3 Antibody is supplied in PBS containing 0.02% sodium azide.

Form/Appearance

Liquid

Concentration

1 mg/mL

Storage

JPH3 antibody can be stored at 4°C for three months and -20°C, stable for up to one year. As with all antibodies care should be taken to avoid repeated freeze thaw cycles. Antibodies should not be exposed to prolonged high temperatures.

Note

For research use only

Application notes

JPH3 antibody can be used for detection of JPH3 by Western blot at 1 µg/mL. Antibody can also be used for immunohistochemistry starting at 2.5 µg/mL. For immunofluorescence start at 20 µg/mL. Antibody validated: Western Blot in human samples; Immunohistochemistry in human samples and Immunofluorescence in human samples. All other applications and species not yet tested.

Isotype

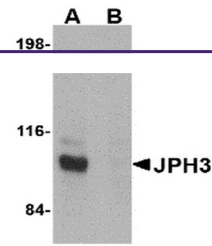
IgG

Clonality

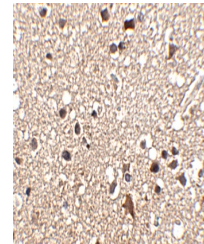
Polyclonal

Uniprot ID
[Q8WXH2](#)
NCBI
[NP_065706](#)
Dilution Range

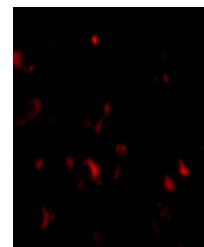
JPH3 antibody can be used for detection of JPH3 by Western blot at 1 µg/mL. Antibody can also be used for immunohistochemistry starting at 2.5 µg/mL. For immunofluorescence start at 20 µg/mL. Antibody validated: Western Blot in human samples; Immunohistochemistry in human samples and



Western blot analysis of JPH3 in Daudi c...



Immunohistochemistry of JPH3 in human br...



Immunofluorescence of JPH3 in Human Brai...