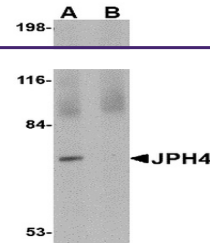
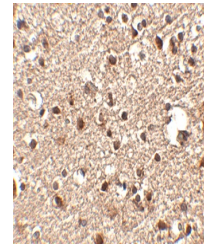

Product Datasheet

JPH4 Antibody (orb1239594)

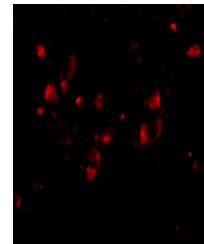
Description	JPH4 Antibody
Species/Host	Rabbit
Reactivity	Human, Mouse, Rat
Conjugation	Unconjugated
Tested Applications	ELISA, IF, IHC-P, WB
Immunogen	JPH4 antibody was raised against a 16 amino acid synthetic peptide near the carboxy terminus of human JPH4. The immunogen is located within amino acids 530 - 580 of JPH4.
Target	JPH4
Preservatives	JPH4 Antibody is supplied in PBS containing 0.02% sodium azide.
Form/Appearance	Liquid
Concentration	1 mg/mL
Storage	JPH4 antibody can be stored at 4°C for three months and -20°C, stable for up to one year. As with all antibodies care should be taken to avoid repeated freeze thaw cycles. Antibodies should not be exposed to prolonged high temperatures.
Note	For research use only
Application notes	JPH4 antibody can be used for detection of JPH4 by Western blot at 1 µg/mL. Antibody can also be used for immunohistochemistry starting at 2.5 µg/mL. For immunofluorescence start at 20 µg/mL. Antibody validated: Western Blot in human samples; Immunohistochemistry in human samples and Immunofluorescence in human samples. All other applications and species not yet tested.
Isotype	IgG
Clonality	Polyclonal
Uniprot ID	Q96JJ6
NCBI	AAH55429
Dilution Range	JPH4 antibody can be used for detection of JPH4 by Western blot at 1 µg/mL. Antibody can also be used for immunohistochemistry starting at 2.5 µg/mL. For immunofluorescence start at 20 µg/mL. Antibody validated: Western Blot in human samples; Immunohistochemistry in human samples and



Western blot analysis of JPH4 in 293 cel...



Immunohistochemistry of JPH4 in human br...



Immunofluorescence of JPH4 in Human Brai...