

---

## Product Datasheet

### NKIRAS1 Antibody (orb1239589)

**Description**

NKIRAS1 Antibody

**Species/Host**

Rabbit

**Reactivity**

Human, Mouse

**Conjugation**

Unconjugated

**Tested**

ELISA, ICC, WB

**Applications**
**Immunogen**

KappaB ras1 antibody was raised against a 15 amino acid synthetic peptide from near the carboxy terminus of human KappaB ras1. The immunogen is located within the last 50 amino acids of KappaB ras1.

**Target**

NKIRAS1

**Preservatives**

KappaB ras1 Antibody is supplied in PBS containing 0.02% sodium azide.

**Form/Appearance**

Liquid

**Concentration**

1 mg/ml

**Storage**

KappaB ras1 antibody can be stored at 4°C for three months and -20°C, stable for up to one year. As with all antibodies care should be taken to avoid repeated freeze thaw cycles. Antibodies should not be exposed to prolonged high temperatures.

**Note**

For research use only

**Application notes**

KappaB ras1 antibody can be used for detection of KappaB ras1 by Western blot at 0.5 - 2 µg/mL. Antibody can also be used for immunocytochemistry starting at 1 µg/mL. Antibody validated: Western Blot in mouse samples and Immunocytochemistry in mouse samples. All other applications and species not yet tested.

**Isotype**

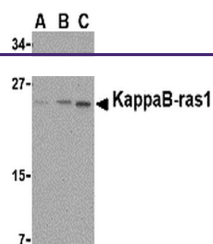
IgG

**Clonality**

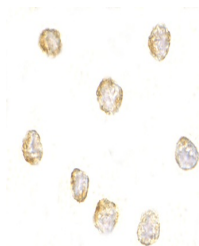
Polyclonal

**Uniprot ID**
[Q9NYS0](#)
**NCBI**
[AAF34998](#)
**Dilution Range**

KappaB ras1 antibody can be used for detection of KappaB ras1 by Western blot at 0.5 - 2 µg/mL. Antibody can also be used for immunocytochemistry starting at 1 µg/mL. Antibody validated: Western Blot in mouse samples and Immunocytochemistry in mouse samples. All other applications and species



Western blot analysis of KappaB ras1 in ...



Immunocytochemistry of KappaB-ras1 in RA...