

---

## Product Datasheet

### NKIRAS1 Antibody (orb1239588)

**Description**

NKIRAS1 Antibody

**Species/Host**

Rabbit

**Reactivity**

Human, Mouse, Rat

**Conjugation**

Unconjugated

**Tested**

ELISA, IHC-P, WB

**Applications**
**Immunogen**

KappaB ras antibody was raised against a 18 amino acid synthetic peptide from near the center of human KappaB ras 1. The immunogen is located within amino acids 80 - 130 of KappaB ras.

**Target**

NKIRAS1

**Preservatives**

KappaB ras Antibody is supplied in PBS containing 0.02% sodium azide.

**Form/Appearance**

Liquid

**Concentration**

1 mg/ml

**Storage**

KappaB ras antibody can be stored at 4°C for three months and -20°C, stable for up to one year. As with all antibodies care should be taken to avoid repeated freeze thaw cycles. Antibodies should not be exposed to prolonged high temperatures.

**Note**

For research use only

**Application notes**

KappaB ras antibody can be used for detection of KappaB ras by Western blot at 2 µg/mL. Antibody can also be used for immunohistochemistry starting at 1 µg/mL. Antibody validated: Western Blot in mouse samples and Immunohistochemistry in human samples. All other applications and species not yet tested.

**Isotype**

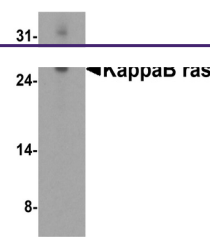
IgG

**Clonality**

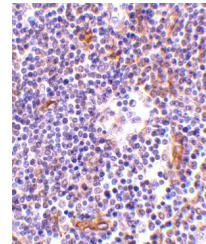
Polyclonal

**Uniprot ID**
[Q9NYS0](#)
**NCBI**
[AAF34998](#)
**Dilution Range**

KappaB ras antibody can be used for detection of KappaB ras by Western blot at 2 µg/mL. Antibody can also be used for immunohistochemistry starting at 1 µg/mL. Antibody validated: Western Blot in mouse samples and Immunohistochemistry in human samples. All other applications and species not yet tested.



Western blot analysis of KappaB ras in R...



Immunohistochemistry of KappaB ras in hu...