

---

## Product Datasheet

### KAT5 Antibody (orb1239587)

**Description**

KAT5 Antibody

**Species/Host**

Rabbit

**Reactivity**

Human, Mouse, Rat

**Conjugation**

Unconjugated

**Tested Applications**

ELISA, IF, IHC-P, WB

**Immunogen**

KAT5 antibody was raised against a 15 amino acid peptide near the carboxy terminus of human KAT5. The immunogen is located within the last 50 amino acids of KAT5.

**Target**

KAT5

**Preservatives**

KAT5 Antibody is supplied in PBS containing 0.02% sodium azide.

**Form/Appearance**

Liquid

**Concentration**

1 mg/mL

**Storage**

KAT5 antibody can be stored at 4°C for three months and -20°C, stable for up to one year.

**Note**

For research use only

**Application notes**

KAT5 antibody can be used for detection of KAT5 by Western blot at 1 - 2 µg/mL. Antibody validated: Western Blot in human samples; Immunohistochemistry in rat samples and Immunofluorescence in rat samples. All other applications and species not yet tested.

**Isotype**

IgG

**Clonality**

Polyclonal

**MW**

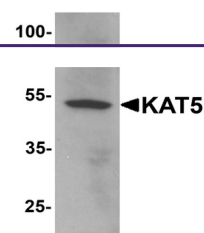
Predicted: 51, 54, 56, 60 kDa Observed: 53 kDa

**Uniprot ID**
[Q92993](https://www.uniprot.org/uniprot/Q92993)
**NCBI**
[NP\\_874369](https://www.ncbi.nlm.nih.gov/nuccore/NP_874369)
**Dilution Range**

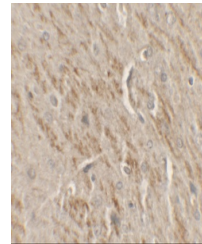
KAT5 antibody can be used for detection of KAT5 by Western blot at 1 - 2 µg/mL. Antibody validated: Western Blot in human samples; Immunohistochemistry in rat samples and Immunofluorescence in rat samples. All other applications and species not yet tested.

**Expiration Date**

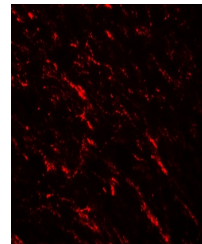
12 months from date of receipt.



Western blot analysis of KAT5 in human b...



Immunohistochemistry of KAT5 in rat brai...



Immunofluorescence of KAT5 in rat brain ...