
Product Datasheet

KCTD15 Antibody (orb1239583)

Description

KCTD15 Antibody

Species/Host

Rabbit

Reactivity

Human, Mouse, Rat

Conjugation

Unconjugated

Tested

ELISA, IF, IHC-P, WB

Applications
Immunogen

KCTD15 antibody was raised against a 16 amino acid synthetic peptide near the carboxy terminus of human KCTD15. The immunogen is located within the last 50 amino acids of KCTD15.

Target

KCTD15

Preservatives

KCTD15 Antibody is supplied in PBS containing 0.02% sodium azide.

Form/Appearance

Liquid

Concentration

1 mg/mL

Storage

KCTD15 antibody can be stored at 4°C for three months and -20°C, stable for up to one year. As with all antibodies care should be taken to avoid repeated freeze thaw cycles. Antibodies should not be exposed to prolonged high temperatures.

Note

For research use only

Application notes

KCTD15 antibody can be used for detection of KCTD15 by Western blot at 0.5 - 1 µg/mL. Antibody can also be used for immunohistochemistry starting at 2.5 µg/mL. For immunofluorescence start at 20 µg/mL. Antibody validated: Western Blot in human samples; Immunohistochemistry in human samples and Immunofluorescence in human samples. All other applications and species not yet tested.

Isotype

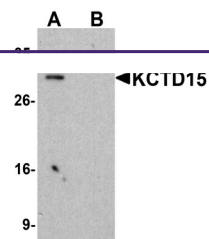
IgG

Clonality

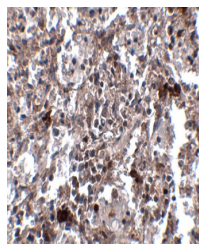
Polyclonal

Uniprot ID
[Q96S11](#)
NCBI
[Q96S11](#)
Dilution Range

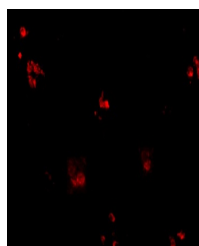
KCTD15 antibody can be used for detection of KCTD15 by Western blot at 0.5 - 1 µg/mL. Antibody can also be used for immunohistochemistry starting at 2.5 µg/mL. For immunofluorescence start at 20 µg/mL. Antibody validated: Western Blot in human samples; Immunohistochemistry in human samples



Western blot analysis of KCTD15 in HeLa ...



Immunohistochemistry of KCTD15 in human ...



Immunofluorescence of KCTD15 in human sp...