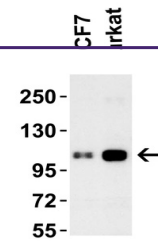
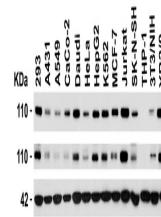

Product Datasheet

KDM1A Antibody (orb1239582)

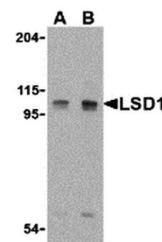
Description	KDM1A Antibody
Species/Host	Rabbit
Reactivity	Human, Mouse, Rat
Conjugation	Unconjugated
Tested Applications	ELISA, IF, IHC-P, WB
Immunogen	Anti-LSD1 antibody (orb1239582) was raised against a peptide corresponding to 16 amino acids near the center of human LSD1. The immunogen is located within amino acids 140-190 of LSD1.
Target	KDM1A
Preservatives	LSD1 Antibody is supplied in PBS containing 0.02% sodium azide.
Form/Appearance	Liquid
Concentration	1 mg/mL
Storage	LSD1 antibody can be stored at 4°C for three months and -20°C, stable for up to one year. As with all antibodies care should be taken to avoid repeated freeze thaw cycles. Antibodies should not be exposed to prolonged high temperatures.
Note	For research use only
Isotype	IgG
Clonality	Polyclonal
MW	Predicted: 93kD Observed: 110 kD
Uniprot ID	O60341
NCBI	NP_001009999
Dilution Range	WB: 0.2 - 2 µg/mL; IHC-P: 2 µg/mL; IF: 20 µg/mL Antibody validated: Western Blot in human, mouse and rat samples; Immunohistochemistry and Immunofluorescence in human samples. All other applications and species not yet tested.
Expiration Date	12 months from date of receipt.



Western Blot Validation in Human Cell Li...



Independent Antibody Validation (IAV) vi...



Western Blot Validation in Mouse P815 Ce...