

## Product Datasheet

### KIF5A Antibody (orb1239579)

**Description**

KIF5A Antibody

**Species/Host**

Rabbit

**Reactivity**

Human, Mouse, Rat

**Conjugation**

Unconjugated

**Tested Applications**

ELISA, ICC, IF, WB

**Immunogen**

KIF5 antibody was raised against a 20 amino acid synthetic peptide from near the center of human KIF5. The immunogen is located within amino acids 330 - 380 of KIF5.

**Target**

KIF5A

**Preservatives**

KIF5 Antibody is supplied in PBS containing 0.02% sodium azide.

**Form/Appearance**

Liquid

**Concentration**

1 mg/mL

**Storage**

KIF5 antibody can be stored at 4°C for three months and -20°C, stable for up to one year. As with all antibodies care should be taken to avoid repeated freeze thaw cycles. Antibodies should not be exposed to prolonged high temperatures.

**Note**

For research use only

**Application notes**

KIF5 antibody can be used for detection of KIF5 by Western blot at 0.5 - 1 µg/mL. Antibody can also be used for immunocytochemistry starting at 5 µg/mL. For immunofluorescence start at 20 µg/mL. Antibody validated: Western Blot in human samples; Immunocytochemistry in human samples and Immunofluorescence in human samples. All other applications and species not yet tested.

**Isotype**

IgG

**Clonality**

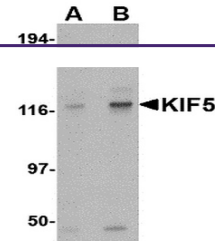
Polyclonal

**MW**

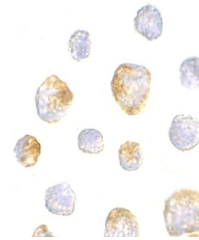
Predicted: 105, 114 kDa Observed: 118 kDa

**Uniprot ID**
[Q12840](#)
**NCBI**
[Q12840](#)
**Dilution Range**

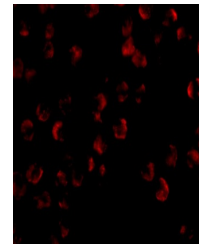
KIF5 antibody can be used for detection of KIF5 by Western blot at 0.5 - 1 µg/mL. Antibody can also be used for immunocytochemistry starting at 5 µg/mL. For immunofluorescence start at 20 µg/mL. Antibody validated: Western Blot in human samples;



Western blot analysis of KIF5 in K562 ce...



Immunocytochemistry of KIF5 in K562 cell...



Immunofluorescence of KIF5 in K562 cells...