
Product Datasheet

KLHL15 Antibody (orb1239573)

Description

KLHL15 Antibody

Species/Host

Rabbit

Reactivity

Human, Mouse, Rat

Conjugation

Unconjugated

Tested

ELISA, ICC, IF, WB

Applications
Immunogen

KLHL15 antibody was raised against a 15 amino acid synthetic peptide near the carboxy terminus of human KLHL15. The immunogen is located within the last 50 amino acids of KLHL15.

Target

KLHL15

Preservatives

KLHL15 Antibody is supplied in PBS containing 0.02% sodium azide.

Form/Appearance

Liquid

Concentration

1 mg/mL

Storage

KLHL15 antibody can be stored at 4°C for three months and -20°C, stable for up to one year. As with all antibodies care should be taken to avoid repeated freeze thaw cycles. Antibodies should not be exposed to prolonged high temperatures.

Note

For research use only

Application notes

KLHL15 antibody can be used for detection of KLHL15 by Western blot at 1 - 2 µg/mL. Antibody can also be used for immunocytochemistry starting at 5 µg/mL. For immunofluorescence start at 20 µg/mL. Antibody validated: Western Blot in human samples; Immunocytochemistry in human samples and Immunofluorescence in human samples. All other applications and species not yet tested.

Isotype

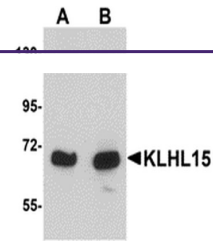
IgG

Clonality

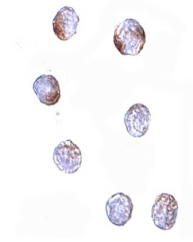
Polyclonal

Uniprot ID
[Q96M94](#)
NCBI
[NP_085127](#)
Dilution Range

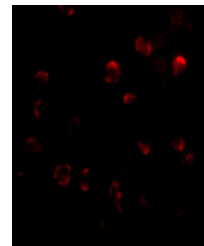
KLHL15 antibody can be used for detection of KLHL15 by Western blot at 1 - 2 µg/mL. Antibody can also be used for immunocytochemistry starting at 5 µg/mL. For immunofluorescence start at 20 µg/mL. Antibody validated: Western Blot in human samples; Immunocytochemistry in human samples



Western blot analysis of KLHL15 in HeLa ...



Immunocytochemistry of KLHL15 in HeLa ce...



Immunofluorescence of KLHL15 in HeLa cel...