
Product Datasheet

KLHL1 Antibody (orb1239572)

Description

KLHL1 Antibody

Species/Host

Rabbit

Reactivity

Human, Rat

Conjugation

Unconjugated

Tested

ELISA, IHC-P, WB

Applications
Immunogen

KLHL1 antibody was raised against a 14 amino acid synthetic peptide from near the amino-terminus of human KLHL1. The immunogen is located within the first 50 amino acids of KLHL1.

Target

KLHL1

Preservatives

KLHL1 Antibody is supplied in PBS containing 0.02% sodium azide.

Form/Appearance

Liquid

Concentration

1 mg/mL

Storage

KLHL1 antibody can be stored at 4°C for three months and -20°C, stable for up to one year. As with all antibodies care should be taken to avoid repeated freeze thaw cycles. Antibodies should not be exposed to prolonged high temperatures.

Note

For research use only

Application notes

KLHL1 antibody can be used for the detection of KLHL1 by Western blot at 2 - 4 µg/mL. Antibody can also be used for immunohistochemistry starting at 10 µg/mL. Antibody validated: Western Blot in human samples and Immunohistochemistry in rat samples. All other applications and species not yet tested.

Isotype

IgG

Clonality

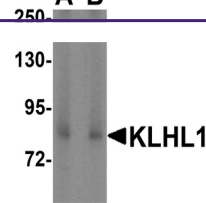
Polyclonal

MW

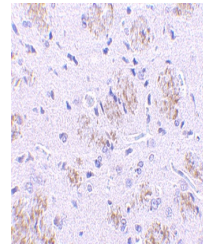
Predicted: 82 kDa Observed: 82 kDa

Uniprot ID
[Q9NR64](#)
NCBI
[AAF81719](#)
Dilution Range

KLHL1 antibody can be used for the detection of KLHL1 by Western blot at 2 - 4 µg/mL. Antibody can also be used for immunohistochemistry starting at 10 µg/mL. Antibody validated: Western Blot in human samples and Immunohistochemistry in rat samples. All other applications and species not yet tested.

A B


Western blot analysis of KLHL1 in HeLa c...



Immunohistochemistry of KLHL1 in rat bra...