
Product Datasheet

KLRA1P Antibody (orb1239569)

Description

KLRA1P Antibody

Species/Host

Rabbit

Reactivity

Human, Mouse, Rat

Conjugation

Unconjugated

Tested Applications

ELISA, ICC, IF, WB

Immunogen

KLRA1 antibody was raised against a 13 amino acid synthetic peptide near the center of human KLRA1. The immunogen is located within amino acids 140 - 190 of KLRA1.

Target

KLRA1P

Preservatives

KLRA1 Antibody is supplied in PBS containing 0.02% sodium azide.

Form/Appearance

Liquid

Concentration

1 mg/mL

Storage

KLRA1 antibody can be stored at 4°C for three months and -20°C, stable for up to one year. As with all antibodies care should be taken to avoid repeated freeze thaw cycles. Antibodies should not be exposed to prolonged high temperatures.

Note

For research use only

Application notes

KLRA1 antibody can be used for detection of KLRA1 by Western blot at 1 - 2 µg/mL. Antibody can also be used for immunocytochemistry starting at 4 µg/mL. For immunofluorescence start at 20 µg/mL. Antibody validated: Western Blot in mouse samples; Immunocytochemistry in human samples and Immunofluorescence in human samples. All other applications and species not yet tested.

Isotype

IgG

Clonality

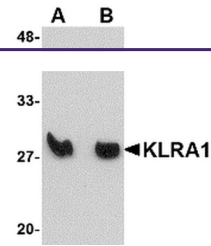
Polyclonal

Uniprot ID

EAW96194

NCBI
[EAW96194](#)
Dilution Range

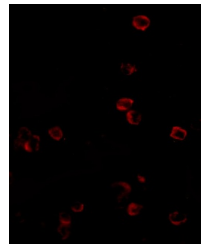
KLRA1 antibody can be used for detection of KLRA1 by Western blot at 1 - 2 µg/mL. Antibody can also be used for immunocytochemistry starting at 4 µg/mL. For immunofluorescence start at 20 µg/mL. Antibody validated: Western Blot in mouse samples; Immunocytochemistry in human samples and



Western blot analysis of KLRA1 in mouse ...



Immunocytochemistry of KLRA1 in 293 cell...



Immunofluorescence of KLRA1 in 293 cells...