
Product Datasheet

KLRA1P Antibody (orb1239568)

Description

KLRA1P Antibody

Species/Host

Rabbit

Reactivity

Human, Mouse, Rat

Conjugation

Unconjugated

Tested

ELISA, IF, IHC-P, WB

Applications
Immunogen

KLRA1 antibody was raised against a 13 amino acid synthetic peptide near the carboxy terminus of human KLRA1. The immunogen is located within amino acids 190 - 240 of KLRA1.

Target

KLRA1P

Preservatives

KLRA1 Antibody is supplied in PBS containing 0.02% sodium azide.

Form/Appearance

Liquid

Concentration

1 mg/mL

Storage

KLRA1 antibody can be stored at 4°C for three months and -20°C, stable for up to one year. As with all antibodies care should be taken to avoid repeated freeze thaw cycles. Antibodies should not be exposed to prolonged high temperatures.

Note

For research use only

Application notes

KLRA1 antibody can be used for detection of KLRA1 by Western blot at 1 - 2 µg/mL. Antibody can also be used for immunohistochemistry starting at 2.5 µg/mL. For immunofluorescence start at 20 µg/mL. Antibody validated: Western Blot in human samples; Immunohistochemistry in human samples and Immunofluorescence in human samples. All other applications and species not yet tested.

Isotype

IgG

Clonality

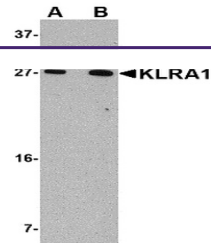
Polyclonal

Uniprot ID

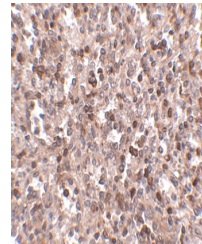
EAW96194

NCBI
[EAW96194](#)
Dilution Range

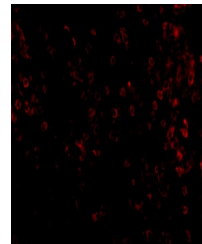
KLRA1 antibody can be used for detection of KLRA1 by Western blot at 1 - 2 µg/mL. Antibody can also be used for immunohistochemistry starting at 2.5 µg/mL. For immunofluorescence start at 20 µg/mL. Antibody validated: Western Blot in human samples; Immunohistochemistry in human samples



Western blot analysis of KLRA1 in 293 ce...



Immunohistochemistry of KLRA1 in human s...



Immunofluorescence of KLRA1 in Human Spl...