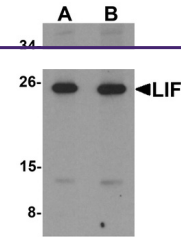
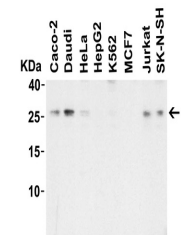

Product Datasheet

LIF Antibody (orb1239553)

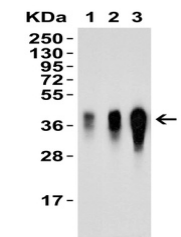
Description	LIF Antibody
Species/Host	Rabbit
Reactivity	Human, Mouse, Rat
Conjugation	Unconjugated
Tested Applications	ELISA, IF, WB
Immunogen	Anti-LIF antibody (orb1239553) was raised against a peptide corresponding to 16 amino acids near the center of human LIF. The immunogen is located within amino acids 50-100 of LIF.
Target	LIF
Preservatives	LIF Antibody is supplied in PBS containing 0.02% sodium azide.
Form/Appearance	Liquid
Concentration	1 mg/mL
Storage	LIF antibody can be stored at 4°C for three months and -20°C, stable for up to one year. As with all antibodies care should be taken to avoid repeated freeze thaw cycles. Antibodies should not be exposed to prolonged high temperatures.
Note	For research use only
Isotype	IgG
Clonality	Polyclonal
MW	Predicted: 22kD Observed: 26kD (Post-modifications: N-linked Glycosylations)
Uniprot ID	P15018
NCBI	NP_002300
Dilution Range	WB: 1-4 µg/mL; IF: 20 µg/mL. Antibody validated: Western Blot in human, mouse and rat samples; Immunofluorescence in mouse samples. All other applications and species not yet tested.
Expiration Date	12 months from date of receipt.



Western Blot Validation in Mouse 3T3 Cel...



Western Blot Validation in Human Cell Li...



Western Blot Validation with Recombinant...