
Product Datasheet

LAMTOR3 Antibody (orb1239539)

Description

LAMTOR3 Antibody

Species/Host

Rabbit

Reactivity

Human, Mouse, Rat

Conjugation

Unconjugated

Tested Applications

ELISA, IF, IHC-P, WB

Immunogen

LAMTOR3 antibody was raised against an 15 amino acid peptide near the center of human LAMTOR3. The immunogen is located within amino acids 40 - 90 of LAMTOR3.

Target

LAMTOR3

Preservatives

LAMTOR3 Antibody is supplied in PBS containing 0.02% sodium azide.

Form/Appearance

Liquid

Concentration

1 mg/mL

Storage

LAMTOR3 antibody can be stored at 4°C for three months and -20°C, stable for up to one year.

Note

For research use only

Application notes

LAMTOR3 antibody can be used for detection of LAMTOR3 by Western blot at 1 - 2 µg/ml. Antibody can also be used for Immunohistochemistry starting at 5 µg/mL. For immunofluorescence start at 20 µg/mL. Antibody validated: Western Blot in human samples; Immunohistochemistry in human samples and Immunofluorescence in human samples. All other applications and species not yet tested.

Isotype

IgG

Clonality

Polyclonal

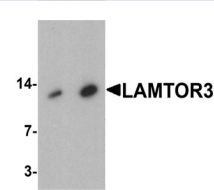
MW

Predicted: 14 kDa Observed: 13 kDa

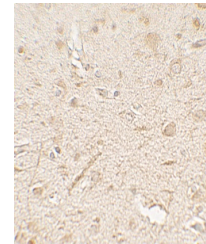
Uniprot ID
[Q9UHA4](#)
NCBI
[NP_068805](#)
Dilution Range

LAMTOR3 antibody can be used for detection of LAMTOR3 by Western blot at 1 - 2 µg/ml. Antibody can also be used for Immunohistochemistry starting at 5 µg/mL. For immunofluorescence start at 20 µg/mL. Antibody validated: Western Blot in human samples; Immunohistochemistry in human samples and Immunofluorescence in human samples. All other applications and species not yet tested.

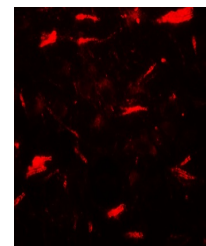
A B



Western blot analysis of LAMTOR3 in huma...



Immunohistochemistry of LAMTOR3 in human...



Immunofluorescence of LAMTOR3 in human b...