

---

## Product Datasheet

### LRRC1 Antibody (orb1239537)

**Description**

LRRC1 Antibody

**Species/Host**

Rabbit

**Reactivity**

Human

**Conjugation**

Unconjugated

**Tested**

ELISA, IF, IHC-P, WB

**Applications**
**Immunogen**

Lano antibody was raised against a peptide corresponding to 15 amino acids near the carboxy terminus of human Lano. The immunogen is located within the last 50 amino acids of Lano.

**Target**

LRRC1

**Preservatives**

Lano Antibody is supplied in PBS containing 0.02% sodium azide.

**Form/Appearance**

Liquid

**Concentration**

1 mg/mL

**Storage**

Lano antibody can be stored at 4°C for three months and -20°C, stable for up to one year. As with all antibodies care should be taken to avoid repeated freeze thaw cycles. Antibodies should not be exposed to prolonged high temperatures.

**Note**

For research use only

**Application notes**

Lano antibody can be used for detection of Lano by Western blot at 1 - 2 µg/mL. Antibody can also be used for immunohistochemistry starting at 10 µg/mL. For immunofluorescence start at 20 µg/mL. Antibody validated: Western Blot in human samples; Immunohistochemistry in human samples and Immunofluorescence in human samples. All other applications and species not yet tested.

**Isotype**

IgG

**Clonality**

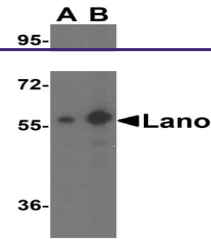
Polyclonal

**MW**

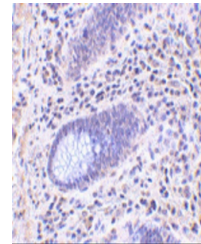
Predicted: 59 kDa Observed: 59 kDa

**Uniprot ID**
[Q9BTT6](#)
**NCBI**
[AAK72246](#)
**Dilution Range**

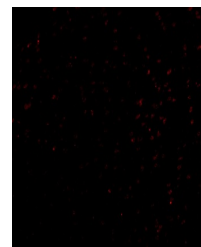
Lano antibody can be used for detection of Lano by Western blot at 1 - 2 µg/mL. Antibody can also be used for immunohistochemistry starting at 10 µg/mL. For immunofluorescence start at 20 µg/mL. Antibody validated: Western Blot in human samples;



Western blot analysis of Lano expression...



Immunohistochemistry of Lano in human co...



Immunofluorescence of Lano in human colo...