
Product Datasheet

CERS5 Antibody (orb1239535)

Description

CERS5 Antibody

Species/Host

Rabbit

Reactivity

Human, Mouse, Rat

Conjugation

Unconjugated

Tested Applications

ELISA, IF, IHC-P, WB

Immunogen

LASS5 antibody was raised against a 18 amino acid synthetic peptide near the amino terminus of the human LASS5. The immunogen is located within amino acids 90 - 140 of LASS5.

Target

CERS5

Preservatives

LASS5 Antibody is supplied in PBS containing 0.02% sodium azide.

Form/Appearance

Liquid

Concentration

1 mg/mL

Storage

LASS5 antibody can be stored at 4°C for three months and -20°C, stable for up to one year. As with all antibodies care should be taken to avoid repeated freeze thaw cycles. Antibodies should not be exposed to prolonged high temperatures.

Note

For research use only

Application notes

LASS5 antibody can be used for detection of LASS5 by Western blot at 1 - 2 µg/mL. Antibody can also be used for immunohistochemistry starting at 2.5 µg/mL. For immunofluorescence start at 20 µg/mL. Antibody validated: Western Blot in rat samples; Immunohistochemistry in human samples and Immunofluorescence in human samples. All other applications and species not yet tested.

Isotype

IgG

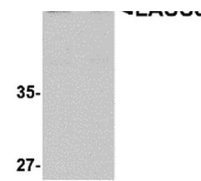
Clonality

Polyclonal

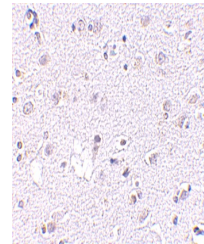
Uniprot ID
[Q8N5B7](#)
NCBI
[NP_671723](#)
Dilution Range

LASS5 antibody can be used for detection of LASS5 by Western blot at 1 - 2 µg/mL. Antibody can also be used for immunohistochemistry starting at 2.5 µg/mL. For immunofluorescence start at 20 µg/mL. Antibody validated: Western Blot in rat samples; Immunohistochemistry in human samples

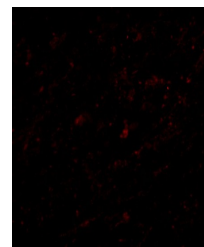
A B



Western blot analysis of LASS5 in rat br...



Immunohistochemistry of LASS5 in human b...



Immunofluorescence of LASS5 in Human Bra...