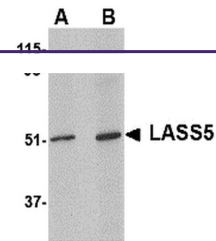
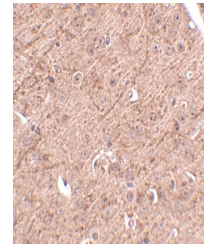

Product Datasheet

CERS5 Antibody (orb1239534)

Description	CERS5 Antibody
Species/Host	Rabbit
Reactivity	Human, Mouse, Rat
Conjugation	Unconjugated
Tested Applications	ELISA, IHC-P, WB
Immunogen	LASS5 antibody was raised against a 14 amino acid synthetic peptide near the amino terminus of the human LASS5. The immunogen is located within the first 50 amino acids of LASS5.
Target	CERS5
Preservatives	LASS5 Antibody is supplied in PBS containing 0.02% sodium azide.
Form/Appearance	Liquid
Concentration	1 mg/mL
Storage	LASS5 antibody can be stored at 4°C for three months and -20°C, stable for up to one year. As with all antibodies care should be taken to avoid repeated freeze thaw cycles. Antibodies should not be exposed to prolonged high temperatures.
Note	For research use only
Application notes	LASS5 antibody can be used for detection of LASS5 by Western blot at 1 - 2 µg/mL. Antibody can also be used for immunohistochemistry starting at 2.5 µg/mL. Antibody validated: Western Blot in human samples and Immunohistochemistry in mouse samples. All other applications and species not yet tested.
Isotype	IgG
Clonality	Polyclonal
Uniprot ID	Q8N5B7
NCBI	NP_671723
Dilution Range	LASS5 antibody can be used for detection of LASS5 by Western blot at 1 - 2 µg/mL. Antibody can also be used for immunohistochemistry starting at 2.5 µg/mL. Antibody validated: Western Blot in human samples and Immunohistochemistry in mouse samples. All other applications and species not yet tested.



Western blot analysis of LASS5 in SK-N-S...



Immunohistochemistry of LASS5 in mouse brain tissue.