
Product Datasheet

CERS6 Antibody (orb1239533)

Description

CERS6 Antibody

Species/Host

Rabbit

Reactivity

Human, Mouse, Rat

Conjugation

Unconjugated

Tested Applications

ELISA, IF, IHC-P, WB

Immunogen

LASS6 antibody was raised against a 13 amino acid synthetic peptide near the carboxy terminus of the human LASS6. The immunogen is located within the last 50 amino acids of LASS6.

Target

CERS6

Preservatives

LASS6 Antibody is supplied in PBS containing 0.02% sodium azide.

Form/Appearance

Liquid

Concentration

1 mg/mL

Storage

LASS6 antibody can be stored at 4°C for three months and -20°C, stable for up to one year. As with all antibodies care should be taken to avoid repeated freeze thaw cycles. Antibodies should not be exposed to prolonged high temperatures.

Note

For research use only

Application notes

LASS6 antibody can be used for detection of LASS6 by Western blot at 1 - 2 µg/mL. Antibody can also be used for immunohistochemistry starting at 2.5 µg/mL. For immunofluorescence start at 20 µg/mL. Antibody validated: Western Blot in rat samples; Immunohistochemistry in mouse samples and Immunofluorescence in mouse samples. All other applications and species not yet tested.

Isotype

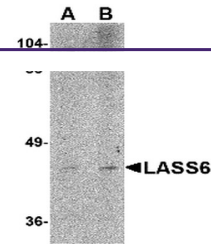
IgG

Clonality

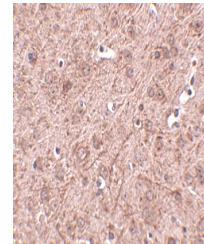
Polyclonal

Uniprot ID
[Q6ZMG9](#)
NCBI
[AAI09285](#)
Dilution Range

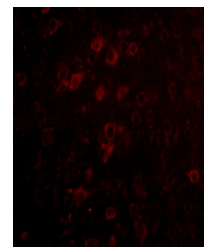
LASS6 antibody can be used for detection of LASS6 by Western blot at 1 - 2 µg/mL. Antibody can also be used for immunohistochemistry starting at 2.5 µg/mL. For immunofluorescence start at 20 µg/mL. Antibody validated: Western Blot in rat samples; Immunohistochemistry in mouse samples



Western blot analysis of LASS6 in rat br...



Immunohistochemistry of LASS6 in mouse b...



Immunofluorescence of LASS6 in Mouse Bra...