

---

## Product Datasheet

### LGI1 Antibody (orb1239529)

**Description**

LGI1 Antibody

**Species/Host**

Rabbit

**Reactivity**

Human, Mouse, Rat

**Conjugation**

Unconjugated

**Tested Applications**

ELISA, IF, IHC-P, WB

**Immunogen**

LGI1 antibody was raised against a 14 amino acid synthetic peptide from near the center of human LGI1. The immunogen is located within amino acids 370 - 420 of LGI1.

**Target**

LGI1

**Preservatives**

LGI1 Antibody is supplied in PBS containing 0.02% sodium azide.

**Form/Appearance**

Liquid

**Concentration**

1 mg/mL

**Storage**

LGI1 antibody can be stored at 4°C for three months and -20°C, stable for up to one year. As with all antibodies care should be taken to avoid repeated freeze thaw cycles. Antibodies should not be exposed to prolonged high temperatures.

**Note**

For research use only

**Application notes**

LGI1 antibody can be used for the detection of LGI1 by Western blot at 2 µg/mL. Antibody can also be used for immunohistochemistry starting at 2.5 µg/mL. For immunofluorescence start at 20 µg/mL. Antibody validated: Western Blot in human samples; Immunohistochemistry in human samples and Immunofluorescence in human samples. All other applications and species not yet tested.

**Isotype**

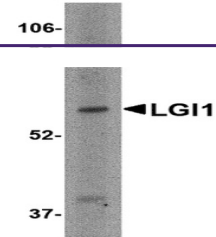
IgG

**Clonality**

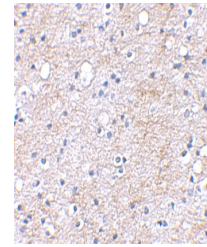
Polyclonal

**Uniprot ID**
[O95970](#)
**NCBI**
[AAQ89244](#)
**Dilution Range**

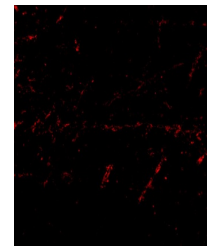
LGI1 antibody can be used for the detection of LGI1 by Western blot at 2 µg/mL. Antibody can also be used for immunohistochemistry starting at 2.5 µg/mL. For immunofluorescence start at 20 µg/mL. Antibody validated: Western Blot in human samples; Immunohistochemistry in human samples and



Western blot analysis of LGI1 in HeLa ce...



Immunohistochemical staining of human br...



Immunofluorescence of LGI1 in Human Brai...