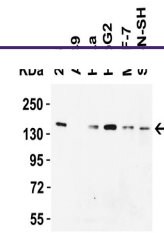
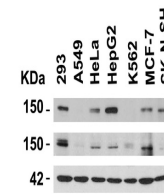

Product Datasheet

KDM3A Antibody (orb1239525)

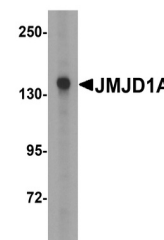
Description	KDM3A Antibody
Species/Host	Rabbit
Reactivity	Human, Rat
Conjugation	Unconjugated
Tested Applications	ELISA, IF, IHC-P, WB
Immunogen	Anti-JMJD1A antibody (orb1239525) was raised against a peptide corresponding to 16 amino acids near the amino terminus of human JMJD1A. The immunogen is located within amino acids 50-100 of JMJD1A.
Target	KDM3A
Preservatives	JMJD1A Antibody is supplied in PBS containing 0.02% sodium azide.
Form/Appearance	Liquid
Concentration	1 mg/mL
Storage	JMJD1A antibody can be stored at 4°C for three months and -20°C, stable for up to one year. As with all antibodies care should be taken to avoid repeated freeze thaw cycles. Antibodies should not be exposed to prolonged high temperatures.
Note	For research use only
Isotype	IgG
Clonality	Polyclonal
MW	Predicted: 147kD Observed: 147kD
Uniprot ID	Q9Y4C1
NCBI	NP_060903
Dilution Range	WB: 1-2 µg/mL; IHC: 5 µg/mL; IF: 20 µg/mL. Antibody validated: Western Blot in human samples; Immunohistochemistry in rat samples; Immunofluorescence in rat samples. All other applications and species not yet tested.
Expiration Date	12 months from date of receipt.



Western Blot Validation in Human Cell Li...



Independent Antibody Validation (IAV) vi...



Western Blot Validation in Human HepG2 C...