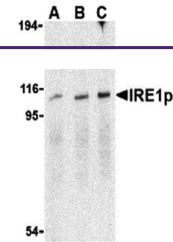
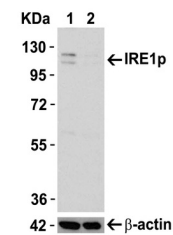

Product Datasheet

ERN1 Antibody (orb1239523)

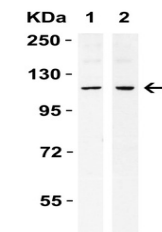
Description	ERN1 Antibody
Species/Host	Rabbit
Reactivity	Human, Mouse, Rat
Conjugation	Unconjugated
Tested Applications	ELISA, ICC, IF, IHC-P, WB
Immunogen	Anti-IRE1p antibody (orb1239523) was raised against a peptide corresponding to 16 amino acids near the carboxy terminus of human IRE1P. The immunogen is located within the last 50 amino acids of IRE1p.
Target	ERN1
Preservatives	IRE1p Antibody is supplied in PBS containing 0.02% sodium azide.
Form/Appearance	Liquid
Concentration	1 mg/mL
Storage	IRE1p antibody can be stored at 4°C for three months and -20°C, stable for up to one year. As with all antibodies care should be taken to avoid repeated freeze thaw cycles. Antibodies should not be exposed to prolonged high temperatures.
Note	For research use only
Isotype	IgG
Clonality	Polyclonal
MW	Predicted: 110kD Observed: 110kD
Uniprot ID	O75460
NCBI	O75460
Dilution Range	WB: 0.5-2 µg/mL; ICC: 1 µg/mL; IF: 2-20 µg/mL; IHC: 2 µg/mL. Antibody validated: Western Blot in human, mouse and rat samples; Immunocytochemistry in mouse samples; Immunofluorescence in human, mouse and rat samples; Immunohistochemistry in human and rat samples. All other applications and species not yet tested.
Expiration Date	12 months from date of receipt.



Western Blot Validation in Mouse A20 Cell...



KO Validation in HeLa Cells. Loading: 10...



Western Blot Validation in Human Cell Li...