

---

## Product Datasheet

### SCARB2 Antibody (orb1239519)

**Description**

SCARB2 Antibody

**Species/Host**

Rabbit

**Reactivity**

Human, Mouse

**Conjugation**

Unconjugated

**Tested**

ELISA, IHC-P, WB

**Applications**
**Immunogen**

LIMP2 antibody was raised against a 18 amino acid synthetic peptide from near the carboxy terminus of human LIMP2. The immunogen is located within the last 50 amino acids of LIMP2.

**Target**

SCARB2

**Preservatives**

LIMP2 Antibody is supplied in PBS containing 0.02% sodium azide.

**Form/Appearance**

Liquid

**Concentration**

1 mg/mL

**Storage**

LIMP2 antibody can be stored at 4°C for three months and -20°C, stable for up to one year. As with all antibodies care should be taken to avoid repeated freeze thaw cycles. Antibodies should not be exposed to prolonged high temperatures.

**Note**

For research use only

**Application notes**

LIMP2 antibody can be used for detection of LIMP2 by Western blot at 1 and 2 µg/mL. Despite its predicted molecular weight, LIMP2 runs at approximately 80 - 85 kDa in SDS-PAGE. Antibody can also be used for immunohistochemistry starting at 10 µg/mL. Antibody validated: Western Blot in human samples and Immunohistochemistry in human samples. All other applications and species not yet tested.

**Isotype**

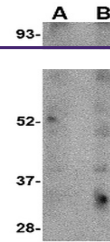
IgG

**Clonality**

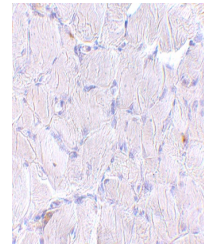
Polyclonal

**Uniprot ID**
[Q14108](#)
**NCBI**
[AAH21892](#)
**Dilution Range**

LIMP2 antibody can be used for detection of LIMP2 by Western blot at 1 and 2 µg/mL. Despite its predicted molecular weight, LIMP2 runs at approximately 80 - 85 kDa in SDS-PAGE. Antibody can also be used for immunohistochemistry starting



Western blot analysis of LIMP2 in human ...



Immunohistochemistry of LIMP2 in human ...