
Product Datasheet

LIN28A Antibody (orb1239518)

Description

LIN28A Antibody

Species/Host

Rabbit

Reactivity

Human

Conjugation

Unconjugated

Tested

ELISA, IF, IHC-P, WB

Applications
Immunogen

Lin28 antibody was raised against a 15 amino acid synthetic peptide near the carboxy terminus of human Lin28. The immunogen is located within the last 50 amino acids of Lin28.

Target

LIN28A

Preservatives

Lin28 Antibody is supplied in PBS containing 0.02% sodium azide.

Form/Appearance

Liquid

Concentration

1 mg/mL

Storage

Lin28 antibody can be stored at 4°C up to one year. Antibodies should not be exposed to prolonged high temperatures.

Note

For research use only

Application notes

Lin28 antibody can be used for detection of Lin28 by Western blot at 1 - 2 µg/mL. Antibody can also be used for immunohistochemistry starting at 5 µg/mL. For immunofluorescence start at 20 µg/mL. Antibody validated: Western Blot in human samples; Immunohistochemistry in human samples and Immunofluorescence in human samples. All other applications and species not yet tested.

Isotype

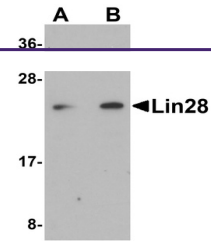
IgG

Clonality

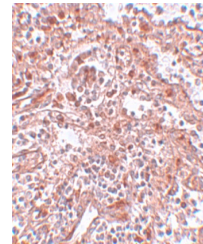
Polyclonal

Uniprot ID
[Q9H9Z2](#)
NCBI
[EAX07814](#)
Dilution Range

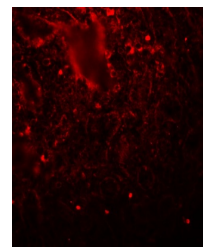
Lin28 antibody can be used for detection of Lin28 by Western blot at 1 - 2 µg/mL. Antibody can also be used for immunohistochemistry starting at 5 µg/mL. For immunofluorescence start at 20 µg/mL. Antibody validated: Western Blot in human samples; Immunohistochemistry in human samples and Immunofluorescence in human samples. All other applications and species not yet tested.



Western blot analysis of Lin28 in Raji c...



Immunohistochemistry of KLF4 in human sp...



Immunofluorescence of LIN28 in human spl...