

Product Datasheet

LIPE Antibody (orb1239516)

Description

LIPE Antibody

Species/Host

Rabbit

Reactivity

Human, Mouse, Rat

Conjugation

Unconjugated

Tested

ELISA, IF, IHC-P, WB

Applications

Immunogen

Lipe antibody was raised against a 14 amino acid synthetic peptide from near the carboxy terminus of human Lipe. The immunogen is located within amino acids 920 - 970 of Lipe.

Target

LIPE

Preservatives

Lipe Antibody is supplied in PBS containing 0.02% sodium azide.

Form/Appearance

Liquid

Concentration

1 mg/mL

Storage

Lipe antibody can be stored at 4°C for three months and -20°C, stable for up to one year. As with all antibodies care should be taken to avoid repeated freeze thaw cycles. Antibodies should not be exposed to prolonged high temperatures.

Note

For research use only

Application notes

Lipe antibody can be used for detection of Lipe by Western blot at 0.5 - 1 µg/mL. Antibody can also be used for immunohistochemistry starting at 2.5 µg/mL. For immunofluorescence start at 20 µg/mL. Antibody validated: Western Blot in human samples; Immunohistochemistry in human samples and Immunofluorescence in human samples. All other applications and species not yet tested.

Isotype

IgG

Clonality

Polyclonal

MW

Predicted: 85, 90, 110, 118 kDa Observed: 90 kDa

Uniprot ID

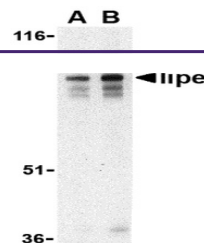
[Q05469](#)

NCBI

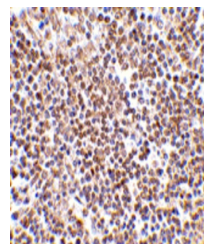
[ABA03168](#)

Dilution Range

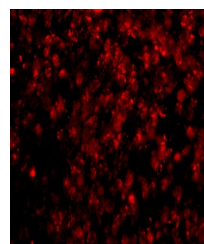
Lipe antibody can be used for detection of Lipe by Western blot at 0.5 - 1 µg/mL. Antibody can also be used for immunohistochemistry starting at 2.5 µg/mL. For immunofluorescence start at 20 µg/mL. Antibody validated: Western Blot in human samples;



Western blot analysis of LIPE in human lymphocytes



Immunohistochemistry of LIPE in human lymphocytes



Immunofluorescence of LIPE in Human Lymphocytes