
Product Datasheet

BIRC7 Antibody (orb1239514)

Description

BIRC7 Antibody

Species/Host

Rabbit

Reactivity

Human

Conjugation

Unconjugated

Tested Applications

ELISA, IF, IHC-P, WB

Immunogen

Livin antibody was raised against a 17 amino acid peptide near the carboxy terminus of human Livin. The immunogen is located within the last 50 amino acids of Livin.

Target

BIRC7

Preservatives

Livin Antibody is supplied in PBS containing 0.02% sodium azide.

Form/Appearance

Liquid

Concentration

1 mg/ml

Storage

Livin antibody can be stored at 4°C for three months and -20°C, stable for up to one year. As with all antibodies care should be taken to avoid repeated freeze thaw cycles. Antibodies should not be exposed to prolonged high temperatures.

Note

For research use only

Application notes

Livin antibody can be used for detection of Livin by Western blot at 0.5 µg/mL. A band at 33 kDa can be detected. Antibody can also be used for immunohistochemistry starting at 5 µg/mL. For immunofluorescence start at 20 µg/mL. Antibody validated: Western Blot in human samples; Immunohistochemistry in human samples and Immunofluorescence in human samples. All other applications and species not yet tested.

Isotype

IgG

Clonality

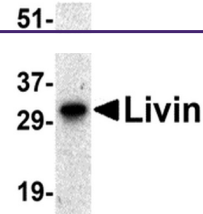
Polyclonal

MW

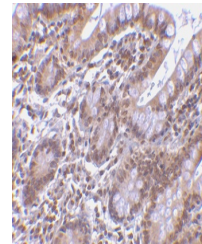
33 kDa

Uniprot ID
[Q96CA5](#)
NCBI
[NP_071444](#)
Dilution Range

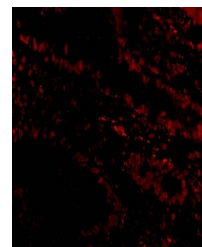
Livin antibody can be used for detection of Livin by Western blot at 0.5 µg/mL. A band at 33 kDa can be detected. Antibody can also be used for immunohistochemistry starting at 5 µg/mL. For



Western blot analysis of Livin expressio...



Immunohistochemistry of Livin in human s...



Immunofluorescence of Livin in Human Sma...