
Product Datasheet

LMBRD1 Antibody (orb1239513)

Description

LMBRD1 Antibody

Species/Host

Rabbit

Reactivity

Human, Mouse, Rat

Conjugation

Unconjugated

Tested Applications

ELISA, IF, IHC-P, WB

Immunogen

LMBRD1 antibody was raised against an 18 amino acid synthetic peptide near the carboxy terminus of human LMBRD1. The immunogen is located within the last 50 amino acids of LMBRD1.

Target

LMBRD1

Preservatives

LMBRD1 Antibody is supplied in PBS containing 0.02% sodium azide.

Form/Appearance

Liquid

Concentration

1 mg/mL

Storage

LMBRD1 antibody can be stored at 4°C for three months and -20°C, stable for up to one year. As with all antibodies care should be taken to avoid repeated freeze thaw cycles. Antibodies should not be exposed to prolonged high temperatures.

Note

For research use only

Application notes

LMBRD1 antibody can be used for detection of LMBRD1 by Western blot at 1 µg/mL. Antibody can also be used for immunohistochemistry starting at 2.5 µg/mL. For immunofluorescence start at 20 µg/mL. Antibody validated: Western Blot in human samples; Immunohistochemistry in human samples and Immunofluorescence in human samples. All other applications and species not yet tested.

Isotype

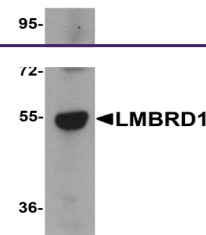
IgG

Clonality

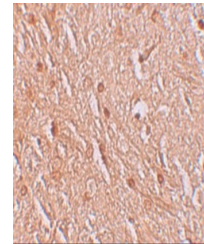
Polyclonal

Uniprot ID
[Q9NUN5](#)
NCBI
[NP_060838](#)
Dilution Range

LMBRD1 antibody can be used for detection of LMBRD1 by Western blot at 1 µg/mL. Antibody can also be used for immunohistochemistry starting at 2.5 µg/mL. For immunofluorescence start at 20 µg/mL. Antibody validated: Western Blot in human samples; Immunohistochemistry in human samples

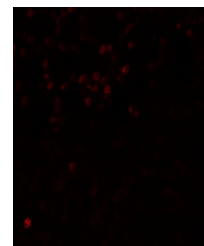


Western blot analysis of LMBRD1 in human...



Immunohistochemistry of LMBRD1 in human...

...



Immunofluorescence of LMBRD1 in human br...