

---

## Product Datasheet

### LRFN1 Antibody (orb1239509)

**Description**

LRFN1 Antibody

**Species/Host**

Rabbit

**Reactivity**

Human, Mouse, Rat

**Conjugation**

Unconjugated

**Tested**

ELISA, IF, IHC-P, WB

**Applications**
**Immunogen**

LRFN1 antibody was raised against an 18 amino acid synthetic peptide near the carboxy terminus of human LRFN1. The immunogen is located within amino acids 700 - 750 of LRFN1.

**Target**

LRFN1

**Preservatives**

LRFN1 Antibody is supplied in PBS containing 0.02% sodium azide.

**Form/Appearance**

Liquid

**Concentration**

1 mg/mL

**Storage**

LRFN1 antibody can be stored at 4°C for three months and -20°C, stable for up to one year. As with all antibodies care should be taken to avoid repeated freeze thaw cycles. Antibodies should not be exposed to prolonged high temperatures.

**Note**

For research use only

**Application notes**

LRFN1 antibody can be used for detection of LRFN1 by Western blot at 1 - 2 µg/mL. Antibody can also be used for immunohistochemistry starting at 2.5 µg/mL. For immunofluorescence start at 20 µg/mL. Antibody validated: Western Blot in human samples; Immunohistochemistry in mouse samples and Immunofluorescence in mouse samples. All other applications and species not yet tested.

**Isotype**

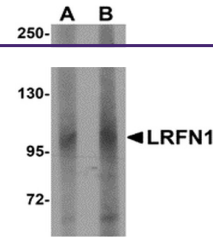
IgG

**Clonality**

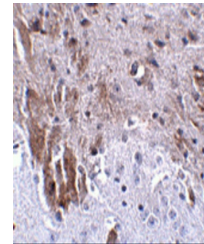
Polyclonal

**Uniprot ID**
[Q9P244](#)
**NCBI**
[Q9P244](#)
**Dilution Range**

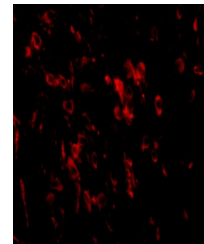
LRFN1 antibody can be used for detection of LRFN1 by Western blot at 1 - 2 µg/mL. Antibody can also be used for immunohistochemistry starting at 2.5 µg/mL. For immunofluorescence start at 20 µg/mL. Antibody validated: Western Blot in human samples; Immunohistochemistry in mouse samples



Western blot analysis of LRFN1 in human ...



Immunohistochemistry of LRFN1 in mouse b...



Immunofluorescence of LRFN1 in mouse bra...