
Product Datasheet

LRFN3 Antibody (orb1239507)

Description

LRFN3 Antibody

Species/Host

Rabbit

Reactivity

Human, Mouse, Rat

Conjugation

Unconjugated

Tested Applications

ELISA, IF, IHC-P, WB

Immunogen

LRFN3 antibody was raised against a 16 amino acid synthetic peptide near the center of human LRFN3. The immunogen is located within amino acids 380 - 430 of LRFN3.

Target

LRFN3

Preservatives

LRFN3 Antibody is supplied in PBS containing 0.02% sodium azide.

Form/Appearance

Liquid

Concentration

1 mg/mL

Storage

LRFN3 antibody can be stored at 4°C for three months and -20°C, stable for up to one year. As with all antibodies care should be taken to avoid repeated freeze thaw cycles. Antibodies should not be exposed to prolonged high temperatures.

Note

For research use only

Application notes

LRFN3 antibody can be used for detection of LRFN3 by Western blot at 1 - 2 µg/mL. Antibody can also be used for immunohistochemistry starting at 2.5 µg/mL. For immunofluorescence start at 20 µg/mL. Antibody validated: Western Blot in human samples; Immunohistochemistry in mouse samples and Immunofluorescence in mouse samples. All other applications and species not yet tested.

Isotype

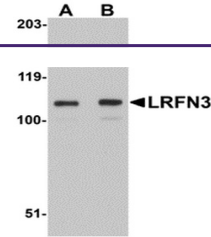
IgG

Clonality

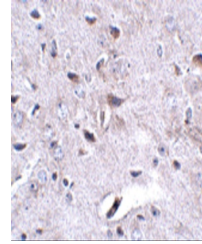
Polyclonal

Uniprot ID
[Q9BTN0](#)
NCBI
[NP_078785](#)
Dilution Range

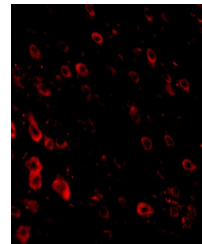
LRFN3 antibody can be used for detection of LRFN3 by Western blot at 1 - 2 µg/mL. Antibody can also be used for immunohistochemistry starting at 2.5 µg/mL. For immunofluorescence start at 20 µg/mL. Antibody validated: Western Blot in human samples; Immunohistochemistry in mouse samples



Western blot analysis of LRFN3 in K562 I...



Immunohistochemistry of LRFN3 in mouse b...



Immunofluorescence of LRFN3 in mouse bra...