
Product Datasheet

LRFN4 Antibody (orb1239506)

Description

LRFN4 Antibody

Species/Host

Rabbit

Reactivity

Human, Mouse, Rat

Conjugation

Unconjugated

Tested Applications

ELISA, IF, IHC-P, WB

Immunogen

LRFN4 antibody was raised against a 14 amino acid synthetic peptide near the carboxy terminus of human LRFN4. The immunogen is located within amino acids 550 - 600 of LRFN4.

Target

LRFN4

Preservatives

LRFN4 Antibody is supplied in PBS containing 0.02% sodium azide.

Form/Appearance

Liquid

Concentration

1 mg/mL

Storage

LRFN4 antibody can be stored at 4°C for three months and -20°C, stable for up to one year. As with all antibodies care should be taken to avoid repeated freeze thaw cycles. Antibodies should not be exposed to prolonged high temperatures.

Note

For research use only

Application notes

LRFN4 antibody can be used for detection of LRFN4 by Western blot at 1 µg/mL. Antibody can also be used for immunohistochemistry starting at 2.5 µg/mL. For immunofluorescence start at 20 µg/mL. Antibody validated: Western Blot in rat samples; Immunohistochemistry in mouse samples and Immunofluorescence in mouse samples. All other applications and species not yet tested.

Isotype

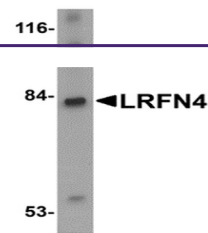
IgG

Clonality

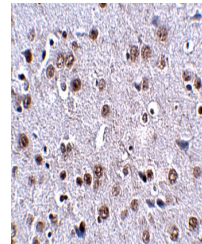
Polyclonal

Uniprot ID
[Q6PJG9](#)
NCBI
[Q6PJG9](#)
Dilution Range

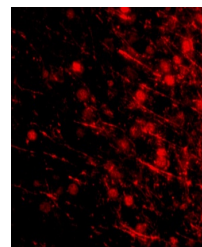
LRFN4 antibody can be used for detection of LRFN4 by Western blot at 1 µg/mL. Antibody can also be used for immunohistochemistry starting at 2.5 µg/mL. For immunofluorescence start at 20 µg/mL. Antibody validated: Western Blot in rat samples; Immunohistochemistry in mouse samples



Western blot analysis of LRFN4 in rat br...



Immunohistochemistry of LRFN4 in mouse b...



Immunofluorescence of LRFN4 in mouse bra...