
Product Datasheet

LRFN5 Antibody (orb1239505)

Description

LRFN5 Antibody

Species/Host

Rabbit

Reactivity

Human, Mouse, Rat

Conjugation

Unconjugated

Tested

ELISA, IHC-P, WB

Applications
Immunogen

LRFN5 antibody was raised against a 16 amino acid synthetic peptide near the carboxy terminus of human LRFN5. The immunogen is located within amino acids 650 - 700 of LRFN5.

Target

LRFN5

Preservatives

LRFN5 Antibody is supplied in PBS containing 0.02% sodium azide.

Form/Appearance

Liquid

Concentration

1 mg/mL

Storage

LRFN5 antibody can be stored at 4°C for three months and -20°C, stable for up to one year. As with all antibodies care should be taken to avoid repeated freeze thaw cycles. Antibodies should not be exposed to prolonged high temperatures.

Note

For research use only

Application notes

LRFN5 antibody can be used for detection of LRFN5 by Western blot at 0.5 - 1 µg/mL. Antibody can also be used for immunohistochemistry starting at 5 µg/mL. Antibody validated: Western Blot in mouse samples and Immunohistochemistry in mouse samples. All other applications and species not yet tested.

Isotype

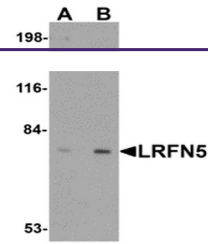
IgG

Clonality

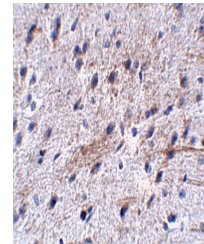
Polyclonal

Uniprot ID
[Q96NI6](#)
NCBI
[Q96NI6](#)
Dilution Range

LRFN5 antibody can be used for detection of LRFN5 by Western blot at 0.5 - 1 µg/mL. Antibody can also be used for immunohistochemistry starting at 5 µg/mL. Antibody validated: Western Blot in mouse samples and Immunohistochemistry in mouse samples. All other applications and species not yet tested.



Western blot analysis of LRFN5 in EL4 ce...



Immunohistochemistry of LRFN5 in mouse b...