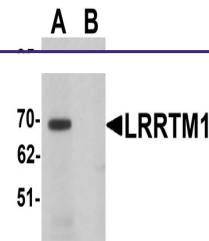
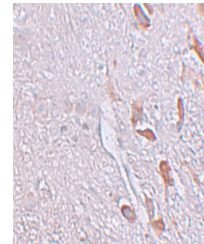

Product Datasheet

LRRTM1 Antibody (orb1239499)

Description	LRRTM1 Antibody
Species/Host	Rabbit
Reactivity	Human, Mouse, Rat
Conjugation	Unconjugated
Tested Applications	ELISA, IF, IHC-P, WB
Immunogen	LRRTM1 antibody was raised against a 17 amino acid synthetic peptide near the carboxy terminus of human LRRTM1. The immunogen is located within amino acids 450 - 500 of LRRTM1.
Target	LRRTM1
Preservatives	LRRTM1 Antibody is supplied in PBS containing 0.02% sodium azide.
Form/Appearance	Liquid
Concentration	1 mg/mL
Storage	LRRTM1 antibody can be stored at 4°C for three months and -20°C, stable for up to one year. As with all antibodies care should be taken to avoid repeated freeze thaw cycles. Antibodies should not be exposed to prolonged high temperatures.
Note	For research use only
Application notes	LRRTM1 antibody can be used for detection of LRRTM1 by Western blot at 1 µg/mL. Antibody can also be used for immunohistochemistry starting at 5 µg/mL. For immunofluorescence start at 20 µg/mL. Antibody validated: Western Blot in mouse samples; Immunohistochemistry in human samples and Immunofluorescence in human samples. All other applications and species not yet tested.
Isotype	IgG
Clonality	Polyclonal
Uniprot ID	Q86UE6
NCBI	AAH45113
Dilution Range	LRRTM1 antibody can be used for detection of LRRTM1 by Western blot at 1 µg/mL. Antibody can also be used for immunohistochemistry starting at 5 µg/mL. For immunofluorescence start at 20 µg/mL. Antibody validated: Western Blot in mouse samples; Immunohistochemistry in human samples

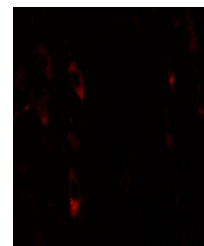


Western blot analysis of LRRTM1 in mouse...



Immunohistochemistry of LRRTM1 in human

...



Immunofluorescence of LRRTM1 in human br...