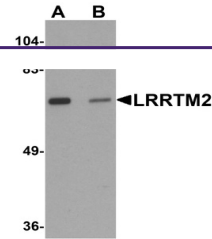
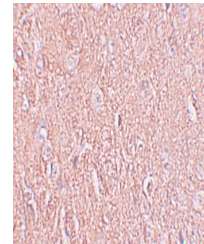

Product Datasheet

LRRTM2 Antibody (orb1239498)

Description	LRRTM2 Antibody
Species/Host	Rabbit
Reactivity	Human, Mouse, Rat
Conjugation	Unconjugated
Tested Applications	ELISA, IF, IHC-P, WB
Immunogen	LRRTM2 antibody was raised against a 17 amino acid synthetic peptide near the carboxy terminus of human LRRTM2. The immunogen is located within the last 50 amino acids of LRRTM2.
Target	LRRTM2
Preservatives	LRRTM2 Antibody is supplied in PBS containing 0.02% sodium azide.
Form/Appearance	Liquid
Concentration	1 mg/mL
Storage	LRRTM2 antibody can be stored at 4°C for three months and -20°C, stable for up to one year. As with all antibodies care should be taken to avoid repeated freeze thaw cycles. Antibodies should not be exposed to prolonged high temperatures.
Note	For research use only
Application notes	LRRTM2 antibody can be used for detection of LRRTM2 by Western blot at 1 µg/mL. Antibody can also be used for immunohistochemistry starting at 2.5 µg/mL. For immunofluorescence start at 20 µg/mL. Antibody validated: Western Blot in human samples; Immunohistochemistry in human samples and Immunofluorescence in human samples. All other applications and species not yet tested.
Isotype	IgG
Clonality	Polyclonal
Uniprot ID	O43300
NCBI	EAW62125
Dilution Range	LRRTM2 antibody can be used for detection of LRRTM2 by Western blot at 1 µg/mL. Antibody can also be used for immunohistochemistry starting at 2.5 µg/mL. For immunofluorescence start at 20 µg/mL. Antibody validated: Western Blot in human samples; Immunohistochemistry in human samples

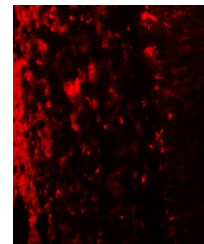


Western blot analysis of LRRTM2 in SK-N-...



Immunohistochemistry of LRRTM2 in human

...



Immunofluorescence of LRRTM2 in human br...