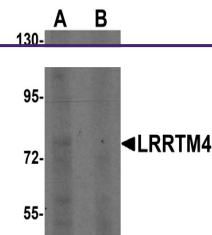
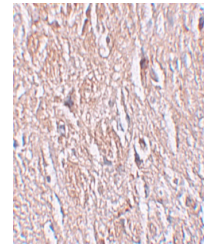

Product Datasheet

LRRTM4 Antibody (orb1239496)

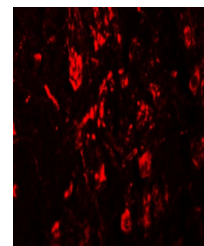
Description	LRRTM4 Antibody
Species/Host	Rabbit
Reactivity	Human
Conjugation	Unconjugated
Tested Applications	ELISA, IF, IHC-P, WB
Immunogen	LRRTM4 antibody was raised against a 16 amino acid synthetic peptide near the center of human LRRTM4. The immunogen is located within amino acids 350 - 400 of LRRTM4.
Target	LRRTM4
Preservatives	LRRTM4 Antibody is supplied in PBS containing 0.02% sodium azide.
Form/Appearance	Liquid
Concentration	1 mg/mL
Storage	LRRTM4 antibody can be stored at 4°C for three months and -20°C, stable for up to one year. As with all antibodies care should be taken to avoid repeated freeze thaw cycles. Antibodies should not be exposed to prolonged high temperatures.
Note	For research use only
Application notes	LRRTM4 antibody can be used for detection of LRRTM4 by Western blot at 1 µg/mL. Antibody can also be used for immunohistochemistry starting at 2.5 µg/mL. For immunofluorescence start at 20 µg/mL. Antibody validated: Western Blot in human samples; Immunohistochemistry in human samples and Immunofluorescence in human samples. All other applications and species not yet tested.
Isotype	IgG
Clonality	Polyclonal
Uniprot ID	Q86VH4
NCBI	NP_001128217
Dilution Range	LRRTM4 antibody can be used for detection of LRRTM4 by Western blot at 1 µg/mL. Antibody can also be used for immunohistochemistry starting at 2.5 µg/mL. For immunofluorescence start at 20 µg/mL. Antibody validated: Western Blot in human samples; Immunohistochemistry in human samples



Western blot analysis of LRRTM4 in HeLa ...



Immunohistochemistry of LRRTM4 in human ...



Immunofluorescence of LRRTM4 in human br...