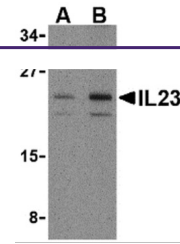


---

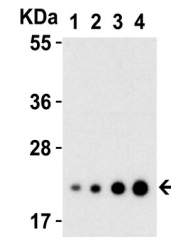
## Product Datasheet

### IL23A Antibody (orb1239493)

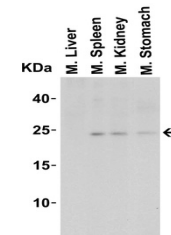
<b>Description</b>	IL23A Antibody
<b>Species/Host</b>	Rabbit
<b>Reactivity</b>	Human, Mouse
<b>Conjugation</b>	Unconjugated
<b>Tested Applications</b>	ELISA, IF, IHC-P, WB
<b>Immunogen</b>	Anti-IL-23 antibody (orb1239493) was raised against a peptide corresponding to 17 amino acids near the amino terminus of human IL-23. The immunogen is located within amino acids 40 - 90 of IL-23.
<b>Target</b>	IL23A
<b>Preservatives</b>	IL-23 Antibody is supplied in PBS containing 0.02% sodium azide.
<b>Form/Appearance</b>	Liquid
<b>Concentration</b>	1 mg/mL
<b>Storage</b>	IL-23 antibody can be stored at 4°C up to one year. Antibodies should not be exposed to prolonged high temperatures.
<b>Note</b>	For research use only
<b>Isotype</b>	IgG
<b>Clonality</b>	Polyclonal
<b>MW</b>	Predicted: 21kD Observed: 22 kD
<b>Uniprot ID</b>	<a href="#">Q9NPF7</a>
<b>NCBI</b>	<a href="#">AAH66268</a>
<b>Dilution Range</b>	WB: 0.25-2 µg/mL; IF: 20 µg/mL, IHC: 2 µg/mL. Antibody validated: Western Blot in human and mouse samples; Immunofluorescence and Immunohistochemistry in mouse samples. All other applications and species not yet tested.
<b>Expiration Date</b>	12 months from date of receipt.



Western Blot Validation in Mouse Pancrea...



Western Blot Validation with Recombinant...



Western Blot Validation in Mouse Tissue

...