

---

## Product Datasheet

### NR1H3 Antibody (orb1239492)

**Description**

NR1H3 Antibody

**Species/Host**

Rabbit

**Reactivity**

Human, Mouse, Rat

**Conjugation**

Unconjugated

**Tested**

ELISA, IF, IHC-P, WB

**Applications**
**Immunogen**

LXR-A antibody was raised against a 15 amino acid synthetic peptide from near the amino terminus human LXR-A. The immunogen is located within amino acids 50 - 100 of LXR-A.

**Target**

NR1H3

**Preservatives**

LXR-A Antibody is supplied in PBS containing 0.02% sodium azide.

**Form/Appearance**

Liquid

**Concentration**

1 mg/mL

**Storage**

LXR-A antibody can be stored at 4°C for three months and -20°C, stable for up to one year. As with all antibodies care should be taken to avoid repeated freeze thaw cycles. Antibodies should not be exposed to prolonged high temperatures.

**Note**

For research use only

**Application notes**

LXR-A antibody can be used for detection of LXR-A by Western blot at 1 - 2 µg/mL. Antibody can also be used for immunohistochemistry starting at 5 µg/mL. For immunofluorescence start at 20 µg/mL. Antibody validated: Western Blot in rat samples; Immunohistochemistry in rat samples and Immunofluorescence in rat samples. All other applications and species not yet tested.

**Isotype**

IgG

**Clonality**

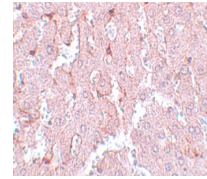
Polyclonal

**MW**

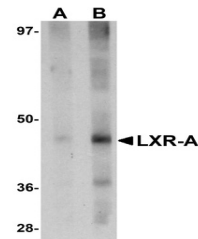
Predicted: 44, 49 kDa Observed: 46 kDa

**Uniprot ID**
[Q13133](#)
**NCBI**
[NP\\_005684](#)
**Dilution Range**

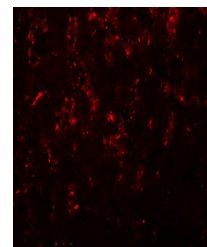
LXR-A antibody can be used for detection of LXR-A by Western blot at 1 - 2 µg/mL. Antibody can also be used for immunohistochemistry starting at 5 µg/mL. For immunofluorescence start at 20 µg/mL. Antibody validated: Western Blot in rat samples;



Immunohistochemistry of LXR-A in rat liv...



Western blot analysis of LXR-A in rat li...



Immunofluorescence of LXR-A in rat liver...