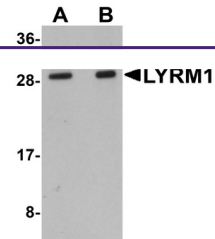
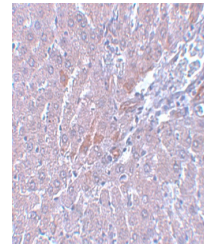

Product Datasheet

LYRM1 Antibody (orb1239491)

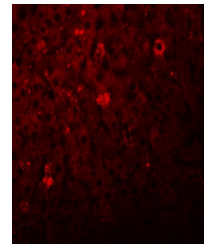
Description	LYRM1 Antibody
Species/Host	Rabbit
Reactivity	Human, Mouse, Rat
Conjugation	Unconjugated
Tested Applications	ELISA, IF, IHC-P, WB
Immunogen	LYRM1 antibody was raised against a 17 amino acid synthetic peptide near the center of human LYRM1. The immunogen is located within the first 50 amino acids of LYRM1.
Target	LYRM1
Preservatives	LYRM1 Antibody is supplied in PBS containing 0.02% sodium azide.
Form/Appearance	Liquid
Concentration	1 mg/mL
Storage	LYRM1 antibody can be stored at 4°C for three months and -20°C, stable for up to one year. As with all antibodies care should be taken to avoid repeated freeze thaw cycles. Antibodies should not be exposed to prolonged high temperatures.
Note	For research use only
Application notes	LYRM1 antibody can be used for detection of LYRM1 by Western blot at 1 - 2 µg/mL. Antibody can also be used for immunohistochemistry starting at 5 µg/mL. For immunofluorescence start at 20 µg/mL. Antibody validated: Western Blot in human samples; Immunohistochemistry in rat samples and Immunofluorescence in rat samples. All other applications and species not yet tested.
Isotype	IgG
Clonality	Polyclonal
Uniprot ID	O43325
NCBI	EAW66844
Dilution Range	LYRM1 antibody can be used for detection of LYRM1 by Western blot at 1 - 2 µg/mL. Antibody can also be used for immunohistochemistry starting at 5 µg/mL. For immunofluorescence start at 20 µg/mL. Antibody validated: Western Blot in human samples; Immunohistochemistry in rat samples and



Western blot analysis of LYRM1 in human ...



Immunohistochemistry of LYRM1 in rat liv...



Immunofluorescence of LYRM1 in rat liver...