

---

## Product Datasheet

### LYRM2 Antibody (orb1239490)

**Description**

LYRM2 Antibody

**Species/Host**

Rabbit

**Reactivity**

Human, Mouse, Rat

**Conjugation**

Unconjugated

**Tested**

ELISA, ICC, IF, WB

**Applications**
**Immunogen**

LYRM2 antibody was raised against a 16 amino acid synthetic peptide near the carboxy terminus of human LYRM2. The immunogen is located within the last 50 amino acids of LYRM2.

**Target**

LYRM2

**Preservatives**

LYRM2 Antibody is supplied in PBS containing 0.02% sodium azide.

**Form/Appearance**

Liquid

**Concentration**

1 mg/mL

**Storage**

LYRM2 antibody can be stored at 4°C for three months and -20°C, stable for up to one year. As with all antibodies care should be taken to avoid repeated freeze thaw cycles. Antibodies should not be exposed to prolonged high temperatures.

**Note**

For research use only

**Application notes**

LYRM2 antibody can be used for detection of LYRM2 by Western blot at 1 - 2 µg/mL. Antibody can also be used for immunocytochemistry starting at 20 µg/mL. For immunofluorescence start at 20 µg/mL. Antibody validated: Western Blot in human samples; Immunocytochemistry in human samples and Immunofluorescence in human samples. All other applications and species not yet tested.

**Isotype**

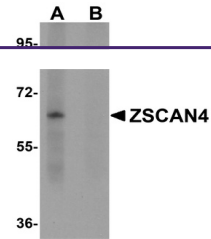
IgG

**Clonality**

Polyclonal

**Uniprot ID**
[Q9NU23](#)
**NCBI**
[NP\\_065199](#)
**Dilution Range**

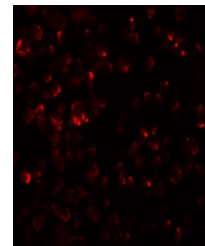
LYRM2 antibody can be used for detection of LYRM2 by Western blot at 1 - 2 µg/mL. Antibody can also be used for immunocytochemistry starting at 20 µg/mL. For immunofluorescence start at 20 µg/mL. Antibody validated: Western Blot in human samples; Immunocytochemistry in human samples and



Western blot analysis of LYRM2 in A549 c...



Immunocytochemistry of LYRM2 in A549 cel...



Immunofluorescence of LYRM2 in A549 cell...