

---

## Product Datasheet

### NDUFB9 Antibody (orb1239489)

**Description**

NDUF9 Antibody

**Species/Host**

Rabbit

**Reactivity**

Human, Mouse, Rat

**Conjugation**

Unconjugated

**Tested**

ELISA, IF, IHC-P, WB

**Applications**
**Immunogen**

LYRM3 antibody was raised against a 17 amino acid synthetic peptide near the carboxy terminus of human LYRM3. The immunogen is located within the last 50 amino acids of LYRM3.

**Target**

NDUF9

**Preservatives**

LYRM3 Antibody is supplied in PBS containing 0.02% sodium azide.

**Form/Appearance**

Liquid

**Concentration**

1 mg/mL

**Storage**

LYRM3 antibody can be stored at 4°C for three months and -20°C, stable for up to one year. As with all antibodies care should be taken to avoid repeated freeze thaw cycles. Antibodies should not be exposed to prolonged high temperatures.

**Note**

For research use only

**Application notes**

LYRM3 antibody can be used for detection of LYRM3 by Western blot at 1 - 2 µg/mL. Antibody can also be used for immunohistochemistry starting at 5 µg/mL. For immunofluorescence start at 20 µg/mL. Antibody validated: Western Blot in human samples; Immunohistochemistry in rat samples and Immunofluorescence in rat samples. All other applications and species not yet tested.

**Isotype**

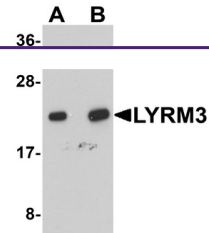
IgG

**Clonality**

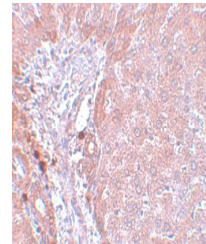
Polyclonal

**Uniprot ID**
[Q9Y6M9](#)
**NCBI**
[Q9Y6M9](#)
**Dilution Range**

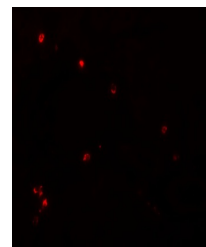
LYRM3 antibody can be used for detection of LYRM3 by Western blot at 1 - 2 µg/mL. Antibody can also be used for immunohistochemistry starting at 5 µg/mL. For immunofluorescence start at 20 µg/mL. Antibody validated: Western Blot in human samples; Immunohistochemistry in rat samples and



Western blot analysis of LYRM3 in human ...



Immunohistochemistry of LYRM3 in rat liv...



Immunofluorescence of LYRM3 in rat liver...