

---

## Product Datasheet

### LZTR1 Antibody (orb1239488)

**Description**

LZTR1 Antibody

**Species/Host**

Rabbit

**Reactivity**

Human, Mouse, Rat

**Conjugation**

Unconjugated

**Tested**

ELISA, IHC-P, WB

**Applications**
**Immunogen**

LZTR1 antibody was raised against a 14 amino acid synthetic peptide near the amino terminus of human LZTR1. The immunogen is located within amino acids 130 - 180 of LZTR1.

**Target**

LZTR1

**Preservatives**

LZTR1 Antibody is supplied in PBS containing 0.02% sodium azide.

**Form/Appearance**

Liquid

**Concentration**

1 mg/mL

**Storage**

LZTR1 antibody can be stored at 4°C for three months and -20°C, stable for up to one year. As with all antibodies care should be taken to avoid repeated freeze thaw cycles. Antibodies should not be exposed to prolonged high temperatures.

**Note**

For research use only

**Application notes**

LZTR1 antibody can be used for detection of LZTR1 by Western blot at 1 - 2 µg/mL. Antibody can also be used for immunohistochemistry starting at 5 µg/mL. Antibody validated: Western Blot in human samples and Immunohistochemistry in mouse samples. All other applications and species not yet tested.

**Isotype**

IgG

**Clonality**

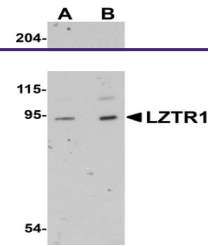
Polyclonal

**Uniprot ID**
[Q8N653](#)
**NCBI**
[CAJ86451](#)
**Dilution Range**

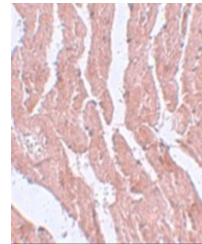
LZTR1 antibody can be used for detection of LZTR1 by Western blot at 1 - 2 µg/mL. Antibody can also be used for immunohistochemistry starting at 5 µg/mL. Antibody validated: Western Blot in human samples and Immunohistochemistry in mouse samples. All other applications and species not yet tested.

**Expiration Date**

12 months from date of receipt.



Western blot analysis of LZTR1 in human ...



Immunohistochemistry of LZTR1 in mouse h...