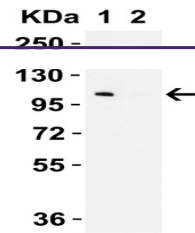
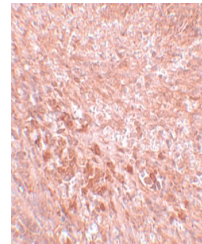

Product Datasheet

SEC16B Antibody (orb1239487)

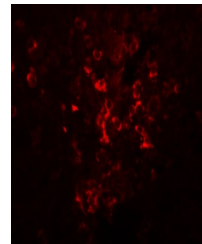
Description	SEC16B Antibody
Species/Host	Rabbit
Reactivity	Human, Mouse, Rat
Conjugation	Unconjugated
Tested Applications	ELISA, IF, IHC-P, WB
Immunogen	LZTR2 antibody was raised against an 18 amino acid synthetic peptide near the carboxy terminus of human LZTR2. The immunogen is located within the last 50 amino acids of LZTR2.
Target	SEC16B
Preservatives	LZTR2 Antibody is supplied in PBS containing 0.02% sodium azide.
Form/Appearance	Liquid
Concentration	1 mg/mL
Storage	LZTR2 antibody can be stored at 4°C for three months and -20°C, stable for up to one year. As with all antibodies care should be taken to avoid repeated freeze thaw cycles. Antibodies should not be exposed to prolonged high temperatures.
Note	For research use only
Application notes	LZTR2 antibody can be used for detection of LZTR2 by Western blot at 0.5 µg/mL. Antibody can also be used for immunohistochemistry starting at 5 µg/mL. For immunofluorescence start at 20 µg/mL. Antibody validated: Western Blot in human samples; Immunohistochemistry in mouse samples and Immunofluorescence in mouse samples. All other applications and species not yet tested.
Isotype	IgG
Clonality	Polyclonal
Uniprot ID	Q96JE7
NCBI	NP_149118
Dilution Range	LZTR2 antibody can be used for detection of LZTR2 by Western blot at 1 µg/mL. Antibody can also be used for immunohistochemistry starting at 5 µg/mL. For immunofluorescence start at 20 µg/mL. Antibody validated: Western Blot in mouse samples; Immunohistochemistry in mouse samples and



WB Validation in 293 Cells. Loading: 10 ...



Immunohistochemistry of LZTR2 in mouse k...



Immunofluorescence of LZTR2 in mouse kid...