
Product Datasheet

MAEL Antibody (orb1239483)

Description

MAEL Antibody

Species/Host

Rabbit

Reactivity

Human, Mouse, Rat

Conjugation

Unconjugated

Tested Applications

ELISA, ICC, IF, WB

Immunogen

Maelstrom antibody was raised against a 16 amino acid synthetic peptide near the carboxy terminus of human Maelstrom. The immunogen is located within amino acids 30 - 80 of Maelstrom.

Target

MAEL

Preservatives

Maelstrom Antibody is supplied in PBS containing 0.02% sodium azide.

Form/Appearance

Liquid

Concentration

1 mg/mL

Storage

Maelstrom antibody can be stored at 4°C for three months and -20°C, stable for up to one year. As with all antibodies care should be taken to avoid repeated freeze thaw cycles. Antibodies should not be exposed to prolonged high temperatures.

Note

For research use only

Application notes

Maelstrom antibody can be used for detection of Maelstrom by Western blot at 1 µg/mL. Antibody can also be used for immunocytochemistry starting at 5 µg/mL. For immunofluorescence start at 20 µg/mL. Antibody validated: Western Blot in human samples; Immunocytochemistry in human samples and Immunofluorescence in human samples. All other applications and species not yet tested.

Isotype

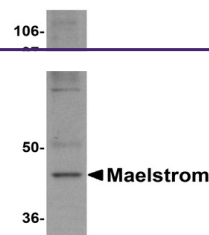
IgG

Clonality

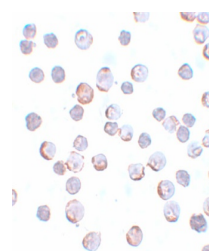
Polyclonal

Uniprot ID
[Q96JY0](#)
NCBI
[AA82463](#)
Dilution Range

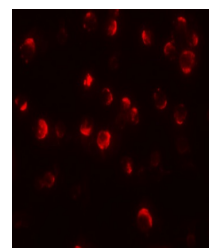
Maelstrom antibody can be used for detection of Maelstrom by Western blot at 1 µg/mL. Antibody can also be used for immunocytochemistry starting at 5 µg/mL. For immunofluorescence start at 20 µg/mL. Antibody validated: Western Blot in human samples; Immunocytochemistry in human samples



Western blot analysis of Maelstrom in He...



Immunocytochemistry of Maelstrom in HeLa...



Immunofluorescence of Maelstrom in HeLa

...